



**MANUFACTURED TO  
WORK AS HARD  
AS YOU DO.**

**HDD TOOLING PARTS CATALOG**



**Ditch Witch®**



# SAVER SUBS

## TABLE OF CONTENTS

- 03 SAVER SUBS**
- 05 DRILL PIPE**
- 08 TRANSITION SUBS & STARTER RODS**
- 10 QUICK CONNECT SYSTEMS**
- 24 DIRT HOUSINGS & BITS**
- 28 TRIHAWK® HD HOUSINGS & BITS**
- 31 ROCKMASTER® AT HOUSINGS & BITS**
- 34 UNIVERSAL HOUSINGS & BITS**
- 36 BACKREAMERS**
- 46 PULLERS, SWIVELS & TABS**
- 51 NOZZLES**
- 51 QUICK WRENCHES & JAWS**
- 52 HYDRA-TONG**
- 53 VACUUM ACCESSORIES**



## SAVER SUBS

Part Number	Drill Thread	Model(s)
400-828	1.21	JT520
300-7827	1.1	JT5
400-2242	#200 (HIWS1)	JT520, JT5
301-891	1.41	JT920, JT920L, JT921, JT921S
300-2340	1.41	JT922 Fine Thread
400-1589	1.3	JT9, JT10, JT922 Coarse Thread
400-2728	#200 (HIWS1)	JT9, JT10
400-604	1.47	JT1220M1
400-2237	#250	JT1220M1
301-892	1.69	JT1720M1
400-905	1.94	JT20, JT2020M1
400-2304	#400 (HIWS1)	JT20, JT1220M1
400-2235	#600 (HISW1)	JT20, JT2020M1
400-1229	2.11	JT2720M1
400-1223	2.11	JT30, JT3020
400-2232	#600 (HIWS1)	JT3020, JT30
400-1134	2.59	JT4020M1
400-1132	3.27	JT7020, JT8020, JT100
400-2115	3.27	JT100 New Gear Box
400-2241	#800 (HIWS1)	JT7020, JT8020, JT100-Legacy
400-2276	#800 (HIWS1)	JT100 New Gear Box
400-1226	2.77 DS	AT2720
400-1225	2.77 SS	AT2720 Cobble
400-1222	2.77 DS	AT30
400-1221	2.77 SS	AT30 Cobble
400-1133	3.25 SS	AT4020
400-1375	3.44 SS	AT100 New Gear Box
400-2234	#800 (HIWS1)	AT100 New Gear Box
300-5735	3.27	AT100 New Gear Box
400-3172	3.36 DS	JT120, AT120
400-10026	#1000 Male	JT120, AT120
400-3238	#1000 Female	JT120, AT120
400-10113	#1000 Male Front Entry WL	JT120, AT120
400-10112	#1000 Female Front Entry WL	JT120, AT120
400-3236	3.36DS Front Entry WL	JT120, AT120

## SAVERLOK® SYSTEMS



SavorLok



Flange



Collar

Part Number	Drill Thread	Model(s)
400-1634	1.94-F SaverLok	JT20, JT2020
400-2255	#600 SaverLok	JT20, JT2020
400-2254	#400-F SaverLok	JT20, JT2020
400-3054	1.76-F SaverLok	JT24
400-3067	#600-F SaverLok	JT24
400-3076	#600-M SaverLok	JT24
400-2037	2.11-F SaverLok	JT25, JT28, JT30
400-2038	#600-F SaverLok	JT25, JT28, JT30
400-2174	#600-M SaverLok	JT25, JT28, JT30
400-2156	2.77 DS-F SaverLok	AT30
400-2219	2.77 SS-F SaverLok	AT30
400-2215	2.11-F SaverLok	AT30
400-2233	#600-F SaverLok	AT30
400-3061	2.36-F SaverLok	AT32
400-3060	2.11-F SaverLok	JT32
400-3071	#600-F SaverLok	JT32
400-3074	#600-M SaverLok	JT32
400-2377	2.10-F SaverLok	JT40
400-2598	#700-F SaverLok	JT40
400-2499	#700-M SaverLok	JT40
400-2378	2.95-F SaverLok	AT40
400-2159	2.59-F SaverLok	JT4020M1
400-2150	2.46-F SaverLok	JT60, AT60
400-2253	#900-F SaverLok	JT60, AT60
400-2148	3.25-F SaverLok	JT60, AT60
400-2166	3.27-F SaverLok	JT100, AT100
400-2256	#800-F SaverLok	JT100, AT100
400-2169	3.44 SS-F SaverLok	JT100, AT100
400-3171	3.36DS-F SaverLok	JT120, AT120
400-10028	#1000-M SaverLok	JT120, AT120
400-3237	#1000-F SaverLok	JT120, AT120

Part Number	Type	Model(s)
301-5719	SaverLok Collar	JT20, JT2020
302-6181	SaverLok Collar	JT24
301-3830	SaverLok Collar	JT25, JT28, JT30
301-6062	SaverLok Collar	AT30
302-7569	SaverLok Collar	JT32, AT32
400-2155	SaverLok Collar	JT4020M1
301-7018	SaverLok Collar	JT40
301-5732	SaverLok Flange	JT60, AT60, JT100, AT100

## DRILL PIPE



### POWERPIPE® HD, FLUID MISER® II

Part Number	Pipe Body x Tool Joint x Thread	Drill Pipe Length	Bend Radius	Model(s)
355-1150	1.58" x 2.125" x 1.3	6' / 1.8 m	82' / 25.0 m	JT9, JT922 Coarse Thread, JT10
355-1229	1.58" x 2.00" x 1.41	6' / 1.8 m	82' / 25.0 m	JT922 Fine Thread
355-1151	2.06" x 2.5" x 1.69	10' / 3 m	107' / 32.6 m	JT1720M1
355-1107	2.06" x 2.63" x 1.94	9.8' / 3 m	107' / 32.6 m	JT20, JT2020
355-1313	2.25" x 2.63" x 1.76	10' / 3 m	117' / 35.6 m	JT24
355-1111	2.38" x 2.75" x 2.11	9.8' / 3 m	123' / 37.5 m	JT25, JT28, JT2720M1, JT30, JT32
355-1211	2.81" x 3.13" x 2.10	15' / 4.57 m	146' / 44.5 m	JT40
355-1100	3.06" x 3.5" x 2.46	15' / 4.57 m	170' / 51.8 m	JT60



### POWERPIPE® HD, UNLINED

Part Number	Pipe Body x Tool Joint x Thread	Drill Pipe Length	Bend Radius	Model(s)
355-1038	1.13" x 1.875" x 1.1	4.9' / 1.5 m	70' / 21.3 m	JT5
355-1228	1.58" x 2" x 1.41	6' / 1.8 m	82' / 25.0 m	JT922 Fine Thread
355-1149	1.58" x 2.125" x 1.3	6' / 1.8 m	82' / 25.0 m	JT9, JT922 Coarse Thread, JT10
355-1152	2.06" x 2.5" x 1.69	7' / 3 m	107' / 32.6 m	JT1720
355-1106	2.06" x 2.63" x 1.94	10' / 3 m	107' / 32.3 m	JT20, JT2020
355-1312	2.25" x 2.63" x 1.76	10' / 3 m	117' / 35.6 m	JT24
355-1094	2.38" x 2.75" x 2.11	9.8' / 3 m	123' / 37.5 m	JT25, JT28, JT2720M1, JT30, JT32
355-1210	2.81" x 3.13" x 2.10	15' / 4.57 m	146' / 44.5 m	JT40
355-1079	3.06" x 3.5" x 2.46	15' / 4.57 m	170' / 51.8 m	JT60
355-1200	3.63" x 4" x 3.27	14.75' / 4.5 m	205' / 56.5 m	JT7020M1, JT8020M1, JT100M1
355-1367	3.95" x 4.38" x 3.36SS	20' / 6 m	205' / 62.5 m	JT120



### FORGED HD

Part Number	Pipe Body x Tool Joint x Thread	Drill Pipe Thread	Bend Radius	Model(s)
355-1301	1.63" x 2.00" x 1.3	6' / 1.8 m	84' / 25.6 m	JT9, JT922 Coarse Thread, JT10
355-1246	2.10" x 2.50" x 1.94	10' / 3.05 m	109' / 33.2 m	JT20
355-1233	2.38" x 2.63" x 1.76	10' / 3 m	123' / 37.5 m	JT24
355-1244	2.38" x 2.75" x 2.11	9.8' / 3.05 m	123' / 37.5 m	JT25, JT28, JT30, JT32
355-1303	2.75" x 3.13" x 2.10	15' / 4.57 m	143' / 43.6 m	JT40

SAVER SUBS

DRILL PIPE



## FORGED HDX

Part Number	Pipe Body X Tool Joint X Thread	Drill Pipe Length	Bend Radius	Model(s)
355-1349	1.63" x 1.88" x #200	6' / 1.8 m	82' / 25 m	JT9, JT10, D9X13, D10X15
355-1317	2.10" x 2.30" x #400	10' / 3.05 m	109' / 33.2 m	D20X22
355-1350	2.38" x 2.63" x #600	10' / 3.05 m	123' / 37.5 m	JT20, JT24, JT25, JT28, JT30, JT32, D24X40, D23X30
355-1352	2.75" x 3.13" x #700	15' / 4.57 m	143' / 43.6 m	JT40



## POWER PIPE®, FLUID MISER® II\*LEGACY

Part Number	Pipe Body X Tool Joint X Thread	Drill Pipe Length	Bend Radius	Model(s)
369-227	1.63" x 2" x 1.41	10' / 3.05 m	100' / 30.5 m	JT920L
369-048	1.58" x 2" x 1.41	6.6' / 2 m	100' / 30.5 m	JT920, JT921
401-239	1.82" x 2.38" x 1.47	10' / 3.05 m	120' / 36.6 m	JT1220
369-235	2.23" x 2.75" x 1.94	9.8' / 3 m	145' / 44.2 m	JT2720
369-221	2.63" x 3.25" x 2.40	14.75' / 4.5 m	150' / 45.7 m	JT4020
369-804	2.81" x 3.5" x 2.59	14.75' / 4.5 m	185' / 56.4 m	JT4020M1



## POWER PIPE®, UNLINED\*LEGACY

Part Number	Pipe Body X Tool Joint X Thread	Drill Pipe Length	Bend Radius	Model(s)
355-1066	1.13" x 1.88" x 1.10	4.9' / 1.5 m	70' / 21.3 m	JT520
355-1052	1.13" x 1.75" x 1.21	4.9' / 1.5 m	70' / 21.3 m	JT520
400-842	1.63" x 2" x 1.41	10' / 3.05 m	100' / 30.5 m	JT920L
400-963	1.58" x 2" x 1.41	6.6' / 2 m	100' / 30.5 m	JT920, JT921
355-1005	1.82" x 2.38" x 1.47	10' / 3.05 m	120' / 36.6 m	JT1220
400-844	2.23" x 2.75" x 1.94	9.8' / 3 m	145' / 44.2 m	JT2720
400-846	2.63" x 3.25" x 2.4	14.75' / 4.5 m	150' / 45.7 m	JT4020
400-847	2.81" x 3.5" x 2.59	14.75' / 4.05 m	185' / 56.4 m	JT4020M1

\*Compatible with retired drill models.



## ALL TERRAIN PIPE

Part Number	Pipe Body X Tool Joint X Thread	Drill Pipe Length	Bend Radius	Model(s)
355-1354	1.94" x 3.25" x 2.77DS / LR	9.3' / 2.84 m	145' / 44.2 m	AT2720, AT30
355-1351	2.23" x 3.25" x 2.77DS	9.3' / 2.84 m	145' / 44.2 m	AT2720, AT30
355-1338	2.94" x 3.25" x 2.77DS / FLUSH	9.3' / 2.84 m	153' / 46.6 m	AT2720, AT30
355-1403	2.50" x 3.0" x 2.36DS	10' / 3.05 m	130' / 39.6 m	AT32
355-1195	3.07" x 3.75" x 2.95DS	15' / 4.6 m	170' / 51.8 m	AT40
355-1258	3.63" x 4.13" x 3.25SS	14.25' / 4.34 m	205' / 62.5 m	AT4020, AT60
355-1254	3.63" x 4.50" x 3.44SS	14.1' / 4.31 m	205' / 62.5 m	AT100
355-1368	3.95" x 4.38" x 3.36SS	20' / 6 m	205' / 62.5 m	AT120

DS = Double Shoulder    LR = Lead Rod    SS = Single Shoulder



## ROD WIPERS

Part Number	Model(s)
116-515	JT5, JT520
149-578	JT920, JT920L, JT921, JT922, JT9, JT10
149-974	JT1220
362-2078	AT30 Flush, AT40
149-973	JT1720, JT20, JT2020, JT2720, JT24, AT2720, JT30, AT30, JT40, HIWS2
362-2694	JT40
117-627	JT4020M1, JT60
157-196	AT4020, AT60, JT7020M1, JT8020M1, JT100M1, AT100

## TOOL JOINT COMPOUNDS

Part Number	Description
255-1077	Standard TJC (1.5 Gal Bellows)
255-1079	Non-Metallic TJC (1.5 Gal Bellows)
255-1080	Standard TJC (2 Gal Bucket)
255-1081	Summer TJC (2 Gal Bucket)
255-1082	Non-Metallic TJC (2 Gal Bucket)
255-1083	Standard TJC (5 Gal Bucket)
255-1084	Summer TJC (5 Gal Bucket)
255-1085	Non-Metallic TJC (5 Gal Bucket)
255-1086	Standard TJC (1 Gal Bucket)
255-1088	Standard TJC (14oz Cartridge)
255-1090	Non-Metallic TJC (14oz Cartridge)
255-1092	Pallet, 5 Gal Standard TJC, 36 Units
255-1093	Pallet, 2 Gal Summer TJC, 54 Units
255-1091	Pallet 2 Gal Standard TJC 54 Units
255-1094	Pallet, 5 Gal Summer TJC, 36 Units
255-1095	Pallet, 2 Gal Non-Metallic TJC, 54 Units
255-1096	Pallet, 5 Gal Non-Metallic TJC, 36 Units
255-1097	Pallet, Bellows Standard TJC, 60 Units
255-1098	Pallet Bellows Non-Metallic TJC, 60 Units
255-1099	Pallet, 1 Gal Standard TJC, 128 Units

# TRANSITION SUBS & STARTER RODS

## TRANSITION SUBS

Part Number	Description	Model(s)
400-1260	1.10 M / 1.10 M	JT5
400-10110	1.10- 5 / 2.0 M API IF	JT5
369-213	1.21 M / 1.21 F	JT520
400-10111	1.21 - 6 / 2.0 M API IF	JT520
369-326	1.41 M / 1.41 F	JT920, JT920L, JT921, JT922
400-2217	1.41 M / 2.0 M API IF	JT920, JT920L, JT921, JT922
400-2216	1.30 M / 2.0 M API IF	JT922 Coarse Thread, JT9, JT10
401-005	1.47 M / 1.94 M	JT1220M1
400-2193	1.47 M / 2.0 M API IF	JT1220M1
368-985	1.69 M / 1.69 F	JT1720M1
400-2747	1.76 M / 2.38 M API R	JT24
400-2202	1.94 M / 2.0 M API IF	JT20, JT2020, JT20XP
400-2192	1.94 M / 2.38 M API R	JT20, JT2020, JT20XP
401-319	1.94 M / 1.94 M	JT20, JT2020, JT20XP
400-231	2.11 M / 2.59 M	JT25, JT28, JT2720M1, JT30, JT3020
400-2191	2.11 M / 2.38 M API R	JT25, JT28, JT2720M1, JT30, JT3020
400-2466	2.10 M / 2.88 M API R	JT40
400-575	2.59 M / 2.59 M	JT4020M1
400-1419	2.59 M / 2.88 M API R	JT4020M1
400-2268	2.46 M / 3.27 M	JT60
400-2269	2.46 M / 2.88 M API R	JT60
400-1479	3.27 M / 3.5 M API IF	JT7020, JT8020, JT100
369-222	3.27 M / 3.27 M	JT7020, JT8020, JT100
400-3278	3.36 M / 3.5-4 API IF M	JT120
400-3289	#1000/2.5-4 API IF M	JT120

## ALL TERRAIN TRANSITION SUBS

Part Number	Description	Model(s)
400-057	2.52 M / 2.59 M	AT2720, AT30
369-410	2.77 M / 2.59 M	AT2720, AT30
400-2305	2.77 M / 2.38 M API R	AT30
400-2784	2.36 M / 2.38 M API R	AT32
400-2788	2.36 M / 2.88 M API R	AT32
400-10140*	2.36M / 2.36F	AT32
400-10140	3.36 DS M / 3.36 DS F AT T-SUB ASSY (2.36DS M / F)	AT32
400-2709	2.95 M / 2.59 M	AT40
400-2465	2.95 M / 2.88 M API R	AT40
400-2684	2.95 M / 3.50 M API IF	AT40
400-2710	2.95 M / 3.27 M API R	AT40
400-10143*	2.95 M / 2.59 F	AT40
400-10143	2.29 DS M / 2.29 DS F AT T-SUB ASSY (2.95DS M / F)	AT40
400-685	3.25 M / 2.59 M	AT4020
400-1679	3.25 M / 2.88 M API R	AT4020, AT60
401-143	3.25 M / 3.27 M	AT4020, AT60
400-1383	3.44 M / 3.27 M	AT100
400-1678	3.44 M / 3.5 M API IF	AT100
400-3077*	2.95 M / 3.25 F	AT40
400-3340*	3.36 M / 3.36 F	AT120
400-3305	3.36 M / 3.5-5 API R M	AT120
400-3278	3.36 M / 3.5-4 API IF M	AT120

\*Dual rod transition sub



## ALL TERRAIN CONNECTORS

Part Number	Description	Model(s)
400-2766	2.77 M / 2.88 M API R	AT30
400-2767	2.77 M / 3.5 M API IF	AT30
400-2789	2.36 M / 2.38 M API R	AT32
400-2790	2.36 M / 2.88 M API R	AT32
400-2768	2.95 M / 2.88 M API R	AT40
400-2769	2.95 M / 3.5 M API IF	AT40
400-2770	3.25 M / 2.88 M API R	AT60
400-2771	3.25 M / 3.50 M API IF	AT60
400-2772	3.44 M / 2.88 M API R	AT100
400-2773	3.44 M / 3.5 M API IF	AT100

## HDX/HIWS1/HXT™ TRANSITION SUBS

Part Number	Description	Model(s)
400-2294	#200 M / #200 M	JT520, JT5
400-2293	#200 M / 1.10 M	JT520, JT5
400-2284	#200 M / 2.0 M API IF	JT920, JT921, JT922
400-2285	#200 M / 1.94 M	JT920, JT921, JT922
400-2286	#200 M / 1.41 F	JT920, JT921, JT922
400-2289	#250 M / 2.0 M API IF	JT1220M1
400-2290	#250 M / 1.94 M	JT1220M1
400-2282	#400 M / 1.94 M	JT1220M1, JT20
400-2278	#400 M / 2.0 M API IF	JT1220M1, JT20
400-2279	#400 M / 2.38 M API	JT1220M1, JT20
400-2283	#600 M / 1.94 M	JT20, JT2020
400-2244	#600 M / 2.38 M API R	JT20, JT2020, JT25, JT28, JT30, JT3020
400-2245	#600 M / 2.59 M API R	JT20, JT2020, JT25, JT28, JT30, JT3020
400-2246	#600 F / 2.59 M API R	JT25
400-2685	#700 M / 2.88 M API R	JT40
400-2271	#900 M / 3.27 M	JT60
400-2272	#900 M / 2.88 M API R	JT60
400-2258	#800 M / 3.27 M	JT7020, JT8020, JT100
400-2257	#800 M / 3.5 M API IF	JT7020, JT8020, JT100
908-0802	#200 F / 2.11 M	D6X6, D7X11, D9X13
908-1702	#250 F / 2.38 M API R	D16X20
908-1705	#400 F / 2.38 M API R	D18X20, D20X22, D24X26
908-4227	#402 F / 2.38 M API R	D24X33
908-4223	#600 F / 2.38 M API R	D24X40
908-4229	#602 F / 2.38 M API R	D33X44, D36X50 (#602)
908-4230	#650 F / 2.38 M API R	D33X44, D36X50 (#650)
908-4241	#700 F / 2.38 M API R	D36X50 (#700)
908-4240	#702 F / 2.38 M API R	D36X50 (#702)
908-5187	#800 F / 2.88 M API R	D50X100, D55X100, D75X100, D80X100
908-5198	#800 F / 3.50 M API R	D80X120, D100X120 (#1000)
908-5194	#802 F / 2.88 M API R	D80X120, D100X120 (#802)
908-5204	#802 F / 3.50 M API R	D80X120, D100X120 (#802)
908-5185	#900 F / 2.88 M API R	D50X100, D80X100
908-5201	#900 F / 3.50 M API R	D50X100, D80X100
908-5206	#1000 F / 3.50 M API R	D80X120, D100X120 (#1000), DD110
400-3289	#1000 M / 3.5-4 M API R	JT120, AT120
908-5206	#1000 F / 3.50 M API R	JT120, AT120

TRANSITION SUBS/ STARTER RODS

TRANSITION SUBS/ STARTER RODS

# QUICK CONNECT SYSTEMS

## EZ CONNECT ASSEMBLIES

### DITCH WITCH® THREAD

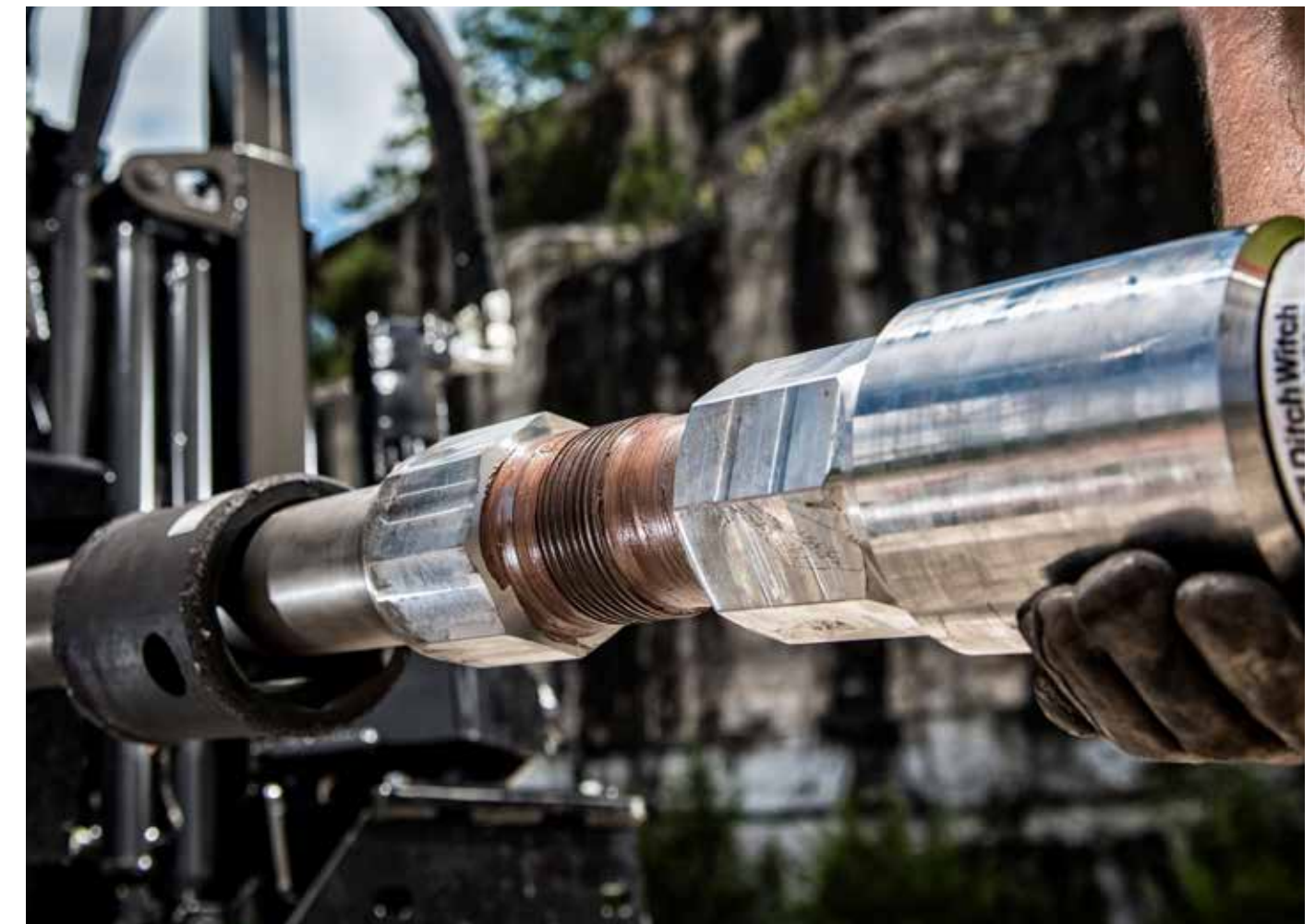
Part Number	Thread	Description	Model(s)
400-1261	1.10 M / 1.31 M EZ2	EZ Connect Assembly	JT5
400-1259		Transition Sub	
149-104		O-Ring	
369-258		Collar	
107-519		Retainer Bolt	
400-1384	1.3 M / 1.63 M EZ2	EZ Connect Assembly	JT9, JT922 Coarse Thread, JT10
400-1178		Transition Sub	
149-911		O-Ring	
400-1860		Collar	
107-540		Retainer Bolt	
401-300	1.94 M / 2.0 M EZ2	EZ Connect Assembly	JT20, JT2020
401-301		Transition Sub	
157-194		O-Ring	
400-1862		Collar	
107-521		Retainer Bolt	
400-2746	1.76 M / 2.0 M EZ2	EZ Connect Assembly	JT24
400-2745		Transition Sub	
157-194		O-Ring	
400-1862		Collar	
107-521		Retainer Bolt	
400-1507	2.77 DS / 2.25 M EZ3	EZ Connect Assembly	AT2720, AT30
400-1506		Transition Sub	
149-548		O-Ring	
400-1864		Collar	
106-847		Retainer Bolt	
316-573		Inner Rod Support Block	
400-1505	2.11 M / 2.25 M EZ3	EZ Connect Assembly	JT25, JT28, JT28, JT30
400-1504		Transition Sub	
149-548		O-Ring	
400-1864		Collar	
107-277		Retainer Bolt	
400-3183	2.36 M / 2.25 M EZ3	EZ Connect Assembly	AT32
400-2785		Transition Sub	
149-548		O-Ring	
400-1864		Collar	
107-277		Retainer Bolt	
400-2462	2.10 M / 2.63 EZ2	EZ Connect Assembly	JT40
400-2461		Transition Sub	
149-041		O-Ring	
400-1865		Collar	
107-513		Retainer Bolt	

QUICK CONNECT SYSTEMS

## EZ CONNECT ASSEMBLIES

### DITCH WITCH® THREAD

Part Number	Thread	Description	Model(s)
400-2464	2.95 M / 2.85-6 M EZ2	EZ Connect Assembly	AT40
400-2463		Transition Sub	
400-2391		Collar	
155-703		O-Ring	
155-074		Retainer Bolt	
400-2393	2.46-4 M / 2.85-6 M EZ2	EZ Connect Assembly	JT60
400-2389		Transition Sub	
155-703		O-Ring	
400-2391		Collar	
155-074		Retainer Bolt	
400-1674	3.27 M / 3.5 M EZ2	EZ Connect Assembly	JT8020M1, JT100M1
400-1481		Transition Sub	
149-042		O-Ring	
368-815		Collar	
105-593		Retainer Bolt	
400-3287	3.36 M / 3.5 M EZ2	EX Connect Assembly	JT120
400-3286		Transition Sub	
149-042		O-Ring	
368-815		Collar	
105-593		Bolt	



QUICK CONNECT SYSTEMS



## EZ CONNECT ASSEMBLIES\*LEGACY DITCH WITCH® THREAD

Part Number	Thread	Description	Model(s)
400-105	1.21 M / 1.31 M EZ2	EZ Connect Assembly	JT520
400-104		Transition Sub	
149-104		O-Ring	
369-258		Collar	
107-519		Retainer Bolt	
400-070	1.41 M / 1.63 M EZ2	EZ Connect Assembly	JT920, JT920L, JT921, JT922 Fine Thread
400-067		Transition Sub	
149-911		O-Ring	
400-1860		Collar	
107-540		Retainer Bolt	
400-918	1.47 M / 1.88 M EZ3	EZ Connect Assembly	JT1220M1
400-917		Transition Sub	
153-856		O-Ring	
400-1861		Collar	
106-847		Retainer Bolt	
400-001	1.69 M / 2.0 M EZ2	EZ Connect Assembly	JT1720M1
369-998		Transition Sub	
157-194		O-Ring	
400-1862		Collar	
107-521		Retainer Bolt	
369-814	2.11 M / 2.25 M EZ2	EZ Connect Assembly	JT2720M1
369-812		Transition Sub	
149-548		O-Ring	
400-1863		Collar	
107-521		Retainer Bolt	
400-095	2.59 M / 2.63 M EZ2	EZ Connect Assembly	JT4020M1
400-096		Transition Sub	
149-041		O-Ring	
400-1865		Collar	
107-513		Retainer Bolt	

QUICK CONNECT SYSTEMS

## EZ CONNECT ASSEMBLIES HDX/HIWS1/HXT™ THREAD

Part Number	Thread	Description	Model(s)
400-2296	#200 M / 1.31 M EZ2	EZ Connect Assembly	JT5, JT520
400-2295		Transition Sub	
149-104		O-Ring	
369-258		Collar	
107-519		Retainer Bolt	
400-2288	#200 M / 1.63 M EZ2	EZ Connect Assembly	JT9, JT920, JT920L, JT921, JT922, JT10
400-2287		Transition Sub	
149-911		O-Ring	
400-1860		Collar	
107-540		Retainer Bolt	
400-2281	#400 M / 2.0 M EZ2	EZ Connect Assembly	JT1220M, JT20
400-2280		Transition Sub	
400-186		Collar	
107-521		Retainer Bolt	
400-2292	#250 M / 1.88 M EZ3	EZ Connect Assembly	JT1220M1
400-2291		Transition Sub	
153-856		O-Ring	
400-1861		Collar	
106-847		Retainer Bolt	
400-2251	#600 M / 2.25 M EZ3	EZ Connect Assembly	JT20, JT2020, JT24, JT25, JT28, JT30, JT3020
400-2247		Transition Sub	
149-548		O-Ring	
400-1864		Collar	
107-277		Retainer Bolt	
400-2252	#600 F / 2.25 M EZ3	EZ Connect Assembly	JT24, JT25
400-2248		Transition Sub	
149-548		O-Ring	
400-1864		Collar	
107-277		Retainer Bolt	
400-2687	#700 M / 2.63 EZ2	Transition Sub	JT40
400-268		Transition Sub	
149-041		O-Ring	
400-1865		Collar	
107-513		Retainer Bolt	
400-2522	#900 M / 2.85-6 M EZ2	EZ Connect Assembly	JT60
400-2523		Transition Sub	
155-703		O-Ring	
400-2391		Collar	
155-074		Retainer Bolt	
400-2260	#800 M / 3.5 M EZ2	EZ Connect Assembly	JT8020M1, JT100M1
400-2259	#800 M / 3.5 M EZ	Transition Sub	
368-815		Collar	
105-593		Retainer Bolt	

QUICK CONNECT SYSTEMS

**HAWKEYE®**  
**DITCH WITCH® THREAD**

Part Number	Thread	Description	Model(s)
918-0734	1.41 M / HKEYE 275 F	Hawkeye 275 Starter Rod Short	JT920, JT920L, JT921, JT922 Fine Thread
918-0759	1.41 M / HKEYE 275 F	Hawkeye 275 Starter Rod Long	JT920, JT920L, JT921, JT922 Fine Thread
918-0715		Hawkeye 275 Collar	
918-0722		O-Ring	
918-0736	1.3 M / HKEYE 275 F	Hawkeye 275 Starter Rod Short	JT9, JT922 Coarse Thread
918-0760	1.3 M / HKEYE 275 F	Hawkeye 275 Starter Rod Long	JT9, JT922 Coarse Thread
918-0715		Hawkeye 275 Collar	
918-0722		O-Ring	
918-0738	1.47 M / HKEYE 275 F	Hawkeye 275 Starter Rod Short	JT1220M1
918-0761	1.47 M / HKEYE 275 F	Hawkeye 275 Starter Rod Long	JT1220M1
918-0715		Hawkeye 275 Collar	
918-0722		O-Ring	
918-2454	1.69 M / HKEYE 350 F	Hawkeye 350 Starter Rod Short	JT1720M1
918-2492	1.69 M / HKEYE 350 F	Hawkeye 350 Starter Rod Long	JT1720M1
918-2439		Hawkeye 350 Collar	
918-2423		O-Ring	
918-2498	1.76 M / HKEYE 350 F	Hawkeye 350 Starter Rod	JT24
918-2439		Hawkeye 350 Collar	
918-2423		O-Ring	
918-2453	1.94 M / HKEYE 350 F	Hawkeye 350 Starter Rod Short	JT2020M1
918-2491	1.94 M / HKEYE 350 F	Hawkeye 350 Starter Rod Long	JT2020M1
918-2439		Hawkeye 350 Collar	
918-2423		O-Ring	
918-2455	2.11 M / HKEYE 350 F	Hawkeye 350 Starter Rod Short	JT24, JT25, JT28, JT2720M1, JT30, JT3020,
918-2493	2.11 M / HKEYE 350 F	Hawkeye 350 Starter Rod Long	JT24, JT25, JT28, JT2720M1, JT30, JT3020
918-2439		Hawkeye 350 Collar	
918-2423		O-Ring	
918-3049	2.11 M / HKEYE 390 F	Hawkeye 390 Starter Rod Short	JT24, JT25, JT28, JT2720M1, JT30, JT3020
918-3091	2.11 M / HKEYE 390 F	Hawkeye 390 Starter Rod Long	JT24, JT25, JT28, JT2720M1, JT30, JT3020
918-3029		Hawkeye 390 Collar	
918-3019		O-Ring	
918-2471	2.77 DS M / HKEYE 350 F	Hawkeye 350 Starter Rod	AT2720M1, AT30
918-2439		Hawkeye 350 Collar	
918-2423		O-Ring	
918-2470	2.52 SS M / HKEYE 350 F	Hawkeye 350 Starter Rod	AT2720M1, AT30
918-2439		Hawkeye 350 Collar	
918-2423		O-Ring	
908-3058	2.77 DS M / HKEYE 390 F	Hawkeye 390 Starter Rod	AT2720M1, AT30
918-3029		Hawkeye 390 Collar	
918-3019		O-Ring	
918-3057	2.52 SS M / HKEYE 390 F	Hawkeye 390 Starter Rod	AT2720M1, AT30
918-3029		Hawkeye 390 Collar	
918-3019		O-Ring	

**HAWKEYE®**  
**DITCH WITCH® THREAD**

Part Number	Thread	Description	Model(s)
918-2459	2.59 M / HKEYE 350 F	Hawkeye 350 Starter Rod Short	JT4020, JT4020M1
918-2494	2.59 M / HKEYE 350 F	Hawkeye 350 Starter Rod Long	JT4020, JT4020M1
918-2439		Hawkeye 350 Collar	
918-2423		O-Ring	
918-3050	2.59 M / HKEYE 390 F	Hawkeye 390 Starter Rod Short	JT4020, JT4020M1
918-3092	2.59 M / HKEYE 390 F	Hawkeye 390 Starter Rod Long	JT4020, JT4020M1
918-3029		Hawkeye 390 Collar	
918-3019		O-Ring	
918-3648	2.59 M / HKEYE 426 F	Hawkeye 426 Starter Rod	JT4020M1
918-3640		Hawkeye 426 Collar	
918-3619		O-Ring	
918-3074	2.10 M / HKEYE 390 F	Hawkeye 390 Starter Rod	JT40
918-3676	2.10 M / HKEYE 426 F	Hawkeye 426 Starter Rod	JT40

**HAWKEYE®**  
**HDX/HIWS1/HXT™ THREAD**

Part Number	Thread	Description	Model(s)
918-0756	#200 M / HKEYE 275 F	Hawkeye 275 Starter Rod	JT5, JT9, JT922
918-0715		Hawkeye 275 Collar	
918-0722		O-Ring	
918-0713	#200 F / HKEYE 275 F	Hawkeye 275 Starter Rod	D6X6, D7X11, D9X13
918-0715		Hawkeye 275 Collar	
918-0722		O-Ring	
918-0757	#250 M / HKEYE 275 F	Hawkeye 275 Starter Rod	JT1220
918-0715		Hawkeye 275 Collar	
918-0722		O-Ring	
918-2486	#400 M / HKEYE 350 F	Hawkeye 350 Starter Rod	JT20, JT1220
918-2439		Hawkeye 350 Collar	
918-2423		O-Ring	
918-2437	#250 F / HKEYE 350 F	Hawkeye 350 Starter Rod	D16X20
918-2439		Hawkeye 350 Collar	
918-2423		O-Ring	
918-2468	#600 M / HKEYE 350 F	Hawkeye 350 Starter Rod	JT20, JT2020
918-2439		Hawkeye 350 Collar	
918-2423		O-Ring	
918-2489	#600 M / HKEYE 350 F	Hawkeye 350 Starter Rod Long	JT24, JT25, JT28, JT30
918-2439		Hawkeye 350 Collar	
918-2423		O-Ring	
918-3067	#600 M / HKEYE 390 F	Hawkeye 390 Starter Rod	JT24, JT25, JT28, JT30
918-3029		Hawkeye 390 Collar	
918-3019		O-Ring	
918-3043	#700 / HKEYE 390 F	Hawkeye 390 Starter Rod	JT40
918-3029		Hawkeye 390 Collar	
918-3019		O-Ring	
918-3654	#700 / HKEYE 426 F	Hawkeye 426 Starter Rod	JT40
918-3460		Hawkeye 426 Collar	
918-3619		O-Ring	



**HAWKEYE®**  
HDX/HIWS1/HXT™ THREAD

Part Number	Thread	Description	Model(s)
918-3046	#250 F / HKEYE 390 F	Hawkeye 390 Starter Rod	D16X20
918-3029		Hawkeye 390 Collar	
918-3019		O-Ring	
918-2436	#400 F / HKEYE 350 F	Hawkeye 350 Starter Rod	D18X20, D22X20, D24X26
918-2439		Hawkeye 350 Collar	
918-2423		O-Ring	
918-3047	#400 F / HKEYE 390 F	Hawkeye 390 Starter Rod	D18X20, D22X20, D24X26
918-3029		Hawkeye 390 Collar	
918-3019		O-Ring	
918-2456	#402 F / HKEYE 350 F	Hawkeye 350 Starter Rod	D24X33
918-2439		Hawkeye 350 Collar	
918-2423		O-Ring	
918-3048	#402 F / HKEYE 390 F	Hawkeye 390 Starter Rod	D24X33
918-3029		Hawkeye 390 Collar	
918-3019		O-Ring	
918-2434	#600 F / HKEYE 350 F	Hawkeye 350 Starter Rod	JT24, JT25, JT28, D24X40
918-2439		Hawkeye 350 Collar	
918-2423		O-Ring	
918-3017	#600 F / HKEYE 390 F	Hawkeye 390 Starter Rod	JT24, JT25, JT28, D24X40
918-3029		Hawkeye 390 Collar	
918-3019		O-Ring	
918-3617	#600 F / HKEYE 426 F	Hawkeye 426 Starter Rod	JT24, JT25, JT28, D24X40
918-3640		Hawkeye 426 Collar	
918-3619		O-Ring	
918-2435	#602 F / HKEYE 350 F	Hawkeye 350 Starter Rod	D33X44, D36X50
918-2439		Hawkeye 350 Collar	
918-2423		O-Ring	
918-3018	#602 F / HKEYE 390 F	Hawkeye 390 Starter Rod	D33X44, D36X50
918-3029		Hawkeye 390 Collar	
918-3019		O-Ring	
918-3609	#602 F / HKEYE 426 F	Hawkeye 426 Starter Rod	D33X44, D36X50
918-3640		Hawkeye 426 Collar	
918-3619		O-Ring	
918-2457	#650 F / HKEYE 350 F	Hawkeye 350 Starter Rod	D33X44, D36X50
918-2439		Hawkeye 350 Collar	
918-2423		O-Ring	
918-3015	#650 F / HKEYE 390 F	Hawkeye 390 Starter Rod	D33X44, D36X50
918-3029		Hawkeye 390 Collar	
918-3019		O-Ring	
918-3649	#650 F / HKEYE 426 F	Hawkeye 426 Starter Rod	D33X44, D36X50
918-3640		Hawkeye 426 Collar	
918-3619		O-Ring	
918-2458	#700 F / HKEYE 350 F	Hawkeye 350 Starter Rod	D33X44, D36X50
918-2439		Hawkeye 350 Collar	
918-2423		O-Ring	
918-3016	#700 F / HKEYE 390 F	Hawkeye 390 Starter Rod	D33X44, D36X50
918-3029		Hawkeye 390 Collar	
918-3019		O-Ring	



**HAWKEYE® REAMER COLLARS**

Part Number	Description	Size
918-2488	Reamer Collar	Hawkeye 350
918-2461	Pull Tab Connector	Hawkeye 350
918-3088	Reamer Collar	Hawkeye 390
918-3054	Pull Tab Connector	Hawkeye 390



**HAWKEYE SCREWS**

Part Number	Description	Size
918-0618	Socket Head Cap Screw	Hawkeye 275
918-0719	Plug	Hawkeye 275
918-0718	Nozzle	Hawkeye 275
918-0001	Socket Head Cap Screw	Hawkeye 350-426
918-2419	Plug	Hawkeye 350-426
918-2418	Nozzle	Hawkeye 350-426



**LPT QUICK CONNECT**

Part Number	Thread	Description	Model(s)
400-2249	#600 M / 2.125 LPT F	2.125 LPT Starter Rod	JT25, JT28, JT30, JT3020
908-4244		2.125 LPT Collar	
908-0812	#200 F / 1.62 LPT F	1.62 LPT Starter Rod	D6X6, D7X7, D9X13
908-0844		1.62 LPT Collar	
908-0101		1.62 LPT Bolt	
908-4273	#250 F / 2.125 LPT F	2.125 LPT Starter Rod	D16X20
908-4244		2.125 LPT Collar	
908-4272	#400 F / 2.125 LPT F	2.125 LPT Starter Rod	D18X20, D20X22, D24X26
908-4244		2.125 LPT Collar	
908-4275	#402 F / 2.125 LPT F	2.125 LPT Starter Rod	D24X33
908-4244		2.125 LPT Collar	
908-4274	#600 F / 2.125 LPT F	2.125 LPT Starter Rod	JT24, JT25, JT28, D24X40
908-4244		2.125 LPT Collar	
908-4277	#602 F / 2.125 LPT F	2.125 LPT Starter Rod	D33X44, D36X50
908-4244		2.125 LPT Collar	
908-4278	#650 F / 2.125 LPT F	2.125 LPT Starter Rod	D33X44, D36X50
908-4244		2.125 LPT Collar	
908-4280	#700 F / 2.125 LPT F	2.125 LPT Starter Rod	D36X50
908-4244		2.125 LPT Collar	
908-0104		2.125 LPT Bolt	
908-4288	2.12 LPT	Reamer Collar	
908-4285	2.12 LPT	Pull Tab Connector	

QUICK CONNECT SYSTEMS

QUICK CONNECT SYSTEMS



## SPLINELOCK® II

Part Number	Thread	Description	Model(s)
908-4271	1.69 M / SPLK 350 M	SplineLok II 350 Starter Rod Short	JT1720M1
908-4311	1.69 M / SPLK 350 M	SplineLok II 350 Starter Rod Long	JT1720M1
908-4270	1.94 M / SPLK 350 M	SplineLok II 350 Starter Rod Short	JT2020M1
908-4310	1.94 M / SPLK 350 M	SplineLok II 350 Starter Rod Long	JT2020M1
908-4318	1.76 M / SPLK 350 M	SplineLok II 350 Starter Rod Long	JT24
908-4276	2.11 M / SPLK 350 M	SplineLok II 350 Starter Rod Short	JT20, JT2020, JT25, JT28, JT2720M1, JT30M1
908-4312	2.11 M / SPLK 350 M	SplineLok II 350 Starter Rod Long	JT20, JT2020, JT25, JT28, JT2720M1, JT30M1
908-4281	2.59 M / SPLK 350 M	SplineLok II 350 Starter Rod Short	JT4020M1
908-4313	2.59 M / SPLK 350 M	SplineLok II 350 Starter Rod Long	JT4020M1
908-4376	2.10 M / SPLK 350 M	SplineLok II Starter Rod Long	JT40
908-4315	#700 M / SPLK 350 M	SplineLok II Starter Rod Long	JT40
908-4300	2.72 DS M / SPLK 350 M	SplineLok II 350 Starter Rod Short	AT30
908-4301	2.52 SS M / SPLK 350 M	SplineLok II 350 Starter Rod Short	AT30
908-4174	#250 F / SPLK 350 M	SplineLok II 350 Starter Rod Short	D16X20
908-4182	#400 F / SPLK 350 M	SplineLok II 350 Starter Rod Short	D18X20, D20X22, D24X26
908-4113	#402 F / SPLK 350 M	SplineLok II 350 Starter Rod Short	D24X33
908-4111	#600 F / SPLK 350 M	SplineLok II 350 Starter Rod Short	JT24, JT25, JT28, D24X40
908-4112	#602 F / SPLK 350 M	SplineLok II 350 Starter Rod Short	D33X44, D36X50
908-4221	#650 F / SPLK 350 M	SplineLok II 350 Starter Rod Short	D33X44, D36X50
908-4279	#700 F / SPLK 350 M	SplineLok II 350 Starter Rod Short	D36X50, JT40
908-1721	#400 M / SPLK 350 M	SplineLok II 350 Starter Rod Short	JT1220, JT20
908-4243	#600 M / SPLK 350 M	SplineLok II 350 Starter Rod Short	JT20
908-4257	#600 M / SPLK 350 M	SplineLok II 350 Starter Rod Short	JT25, JT28, JT30
908-4258	#700 M / SPLK 350 M	SplineLok II 350 Starter Rod Short	D33X44, D36X50, JT40
908-4104		Solid Pins	
908-0036		Coiled Pins	
908-4009		O-Ring	

## CONNECTORS

Part Number	Description	Model(s)
369-310	1.21 M / 1.41 F	JT520
369-470	1.21 M / 1.21 M	JT520
908-0804	1.21 M / #200 M	JT520
368-263	1.41 M / 1.94 M	JT9, JT920, JT920L, JT921, JT922, JT10
908-0806	1.41 M / 2.11 M	JT9, JT920, JT920L, JT921, JT922, JT10
908-0805	1.41 M / #200 M	JT9, JT920, JT920L, JT921, JT922, JT10
400-2220	1.41 M / 2.0 M API IF	JT9, JT920, JT922, JT10
400-2222	2.0 F API IF / 1.94 M	JT9, JT920, JT922, JT10
400-2221	2.0 F API IF / 1.41 F	JT9, JT920, JT922, JT10
400-2223	2.0 M API IF / 1.94 F	JT9, JT920, JT922, JT10
368-264	1.69 M / 1.94 M	JT1720M1
906-1783	1.69 F / 2.38 M API R	JT1720M1
908-1707	1.69 M / 2.38 M API R	JT1720M1
906-2562	1.69 M / 2.12 LPT M	JT1720M1
368-261	1.94 M / 1.94 M	JT1720M1, JT20, JT2020
369-139	1.94 M / 2.40 M	JT1720M1, JT20, JT2020
906-2582	1.94 M / 2.38 M API R	JT1720M1, JT20, JT2020
908-0818	1.94 F / 2.11 M	JT1720M1, JT20, JT2020
908-1703	1.94 F / 2.38 M API R	JT1720M1, JT20, JT2020
908-1708	1.94 M / 2.38 M API R	JT1720M1, JT20, JT2020
908-4189	1.94 M / 2.12 LPT F	JT1720M1, JT20, JT2020
908-4103	2.38 API R M / 2.12 LPT M	D16X20, D24X33
400-2570	2.38 API R M / 2.38 API R M	JT1720, JT20, JT2020, JT24, JT25, JT28, JT2720, JT30, JT3020, JT40, D16X20, D18X20, D20X22, D24X26, D24X33, D24X40, D33X44, D36X50
400-1825	2.38 API R F / 2.88 API R M	JT1720, JT20, JT2020, JT24, JT25, JT28, JT2720, JT30, JT3020, JT40, D16X20, D18X20, D20X22, D24X26, D24X33, D24X40, D33X44, D36X50
400-2739	2.38 API R F / 3.5 API IF M	JT1720, JT20, JT2020, JT24, JT25, JT28, JT2720, JT30, JT3020, JT40, D16X20, D18X20, D20X22, D24X26, D24X33, D24X40, D33X44, D36X50
400-2571	2.88 API R M / 2.88 API R M	JT40, JT4020, D24X26, D24X40, D36X50, D50X100, D55X10
400-567	2.59 F / 2.40 M	JT4020
400-1676	2.59 F / 2.88 M API R	JT4020
400-568	2.59 F / 3.50 F API R	JT4020
400-576	2.59 F / 3.27 M	JT4020
908-4226	2.59 F / 2.38 M API R	JT4020
908-4004	2.38 F API R / 2.59 M	JT4020
400-035	3.5 IF M / 3.5 IF M	JT40, JT4020, D24X26, D24X40, D36X50, D50X100, D55X10, DD110
400-3277	3.36 M / 1.5 API IF M	JT120, AT120
400-3288	#1000 M / 3.5 API IF M	JT120, AT120
400-3306	3.36 M / 3.5 API R M	JT120, AT120
908-5207	#1000 F / 3.5 API R M	JT120, AT120
908-5213	#1000 F / 3.5 API IF M	JT120, AT120
400-10146	5-1/2 FH, F / 100K (Pull tab)	JT120, AT120
400-10132	3.36 DS, M / 5-1/2 FH, M	JT120, AT120
400-10133	#1000, M / 5-1/2 FH, M	JT120, AT120
400-10134	#1000, F / 5-1/2 FH, M	JT120, AT120

QUICK CONNECT SYSTEMS

QUICK CONNECT SYSTEMS



## CONNECTORS

Part Number	Description	Model(s)
400-016	2.88 M API IF / 2.88 M API R	AT4020
400-038	2.88 M API R / 2.38 M API IF	AT4020
400-040	2.88 M API R / 3.50 M API R	AT4020
400-3048	2.88 API R F / 3.5 API IF M	JT60
400-3049	3.5 F API IF / 2.88 M API R	JT60
400-2308	3.27 F / 2.88 M API R	JT60
400-2307	2.88 F API R / 3.27 M	JT60
400-2230	3.5 F API IF / 3.27 M	JT60, JT7020, JT8020, JT100
401-255	3.27 F / 2.88 M API IF	JT60, AT60, JT7020, JT8020, JT100
401-256	3.27 F / 3.5 M API R	JT60, AT60, JT7020, JT8020, JT100
908-5188	3.27 F / 2.88 M API R	JT7020, JT8020, JT100
908-5196	3.27 F / 3.5 M API R	JT7020, JT8020, JT100
400-1675	3.27 F / 3.5 M API IF	JT7020, JT8020, JT100
400-035	3.5 M API IF / 3.5 M API IF	JT7020, JT8020, JT100
400-036	3.5 M API IF / 3.5 M API R	JT7020, JT8020, JT100
369-472	3.27 F / 3.5 F API R	JT60, AT60, JT7020, JT8020, JT100
369-257	1.31 F EZ2 / 1.21 M	JT5, JT520
369-307	1.31 F EZ2 / 1.94 M	JT5, JT520
369-309	1.31 F EZ2 / 5K Tab	JT5, JT520
369-311	1.31 F EZ2 / 1.41 F	JT5, JT520
400-1431	1.31 F EZ2 / 1.10 M	JT5, JT520
908-0792	1.31 F EZ2 / 1.41 F	JT5, JT520
400-064	1.63 F EZ2 / 1.41 F	JT9, JT920, JT920L, JT921, JT922
400-2672	1.31 F EZ2 / 2.0 M	JT5, JT520
400-068	1.63 F EZ2 / 1.94 M	JT9, JT920, JT920L, JT921, JT922
908-0793	1.63 F EZ2 / 2.11 M	JT9, JT920, JT920L, JT921, JT922
400-2218	1.63 F EZ2 / 2.0 M API IF	JT9, JT920, JT920L, JT921, JT922
400-920	1.88 F EZ3 / 1.94 M	JT1220M1
401-006	1.88 F EZ3 / 1.94 F	JT1220M1
908-0808	1.88 F EZ3 / 2.11 M	JT1220M1
908-0816	1.88 F EZ3 / 2.38 M API R	JT1220M1
400-2188	1.88 F EZ3 / 2.0 M API IF	JT1220M1
369-999	2.0 F EZ / 1.94 M	JT1720M1, JT20, JT2020
400-615	2.0 F EZ2 / 1.94 F	JT1720M1, JT20, JT2020
400-824	2.0 F EZ2 / 2.59 M	JT1720M1, JT20, JT2020
400-2201	2.0 F EZ2 / 2.0 M API IF	JT1720M1, JT20, JT2020
908-1706	2.0 F EZ2 / 2.38 M API R	JT1720M1, JT20, JT2020
400-1050	2.25 F EZ3 / 1.94 M	JT1720M1, JT20, JT2020
400-1010	2.25 F EZ3 / 2.59 M	JT24, JT25, JT28, JT30, JT3020
400-309	2.25 F EZ2 / 2.59 M	JT2720M1
401-340	2.25 F EZ2 / 2.4 M	JT2720M1
908-4235	2.25 F EZ2 / 2.38 M API R	JT24, JT25, JT28, JT30, JT3020
908-4225	2.25 F EZ3 / 2.38 M API R	JT24, JT25, JT28, JT30, JT3020

## CONNECTORS

Part Number	Description	Model(s)
400-091	2.63 F EZ2 / 3.27 M	JT40, JT4020
400-1417	2.63 F EZ2 / 2.88 M API R	JT40, JT4020
400-094	2.63 F EZ2 / 2.59 M	JT40, JT4020
400-2392	2.85 6F EZ2 / 2.88 M API R	AT40, JT60
400-2394	2.85 6F EZ2 / 3.50 M API IF	AT40, JT60
400-2395	2.85 6F EZ2 / 3.27 M	AT40, JT60
368-813	3.5 F EZ2 / 3.27 M	JT60, JT7020, JT8020, JT100
400-1480	3.5 F EZ / 3.50 M API IF	JT7020, JT8020, JT100
400-2277	3.5-F EZ / 2.88 M API R	JT60
368-813	3.5-F EZ / 3.27 M	JT60
908-0817	#200 F / 2.11 M	JT5, JT520, JT922, D6X6, D7X11, D9X13
908-0701	#200 M / 2.0 M API IF	JT5, JT520, JT922, D6X6, D7X11, DX913
908-1701	#250 F / 2.38 M API R	JT1220, D16X20
908-1724	#400 M / 2.0 M API IF	JT1220, JT2020, D18X20, D20X22, D24X26
908-1725	#400 M / 2.38 M API R	JT1220, JT2020, D18X20, D20X22, D24X26
908-1726	#400 M / 1.94 M	JT1220, JT2020, D18X20, D20X22, D24X26
908-1704	#400 F / 2.38 M API R	JT1220, JT20, JT2020, D18X20, D20X22, D24X26
908-4228	#402 F / 2.38 M API R	D24X33
908-4196	#600 F / 2.88 M API R	JT20, JT2020, JT24, JT25, JT28, JT3020, JT30, D24X40
908-4224	#600 F / 2.38 M API R	JT20, JT2020, JT24, JT25, JT28, JT3020, JT30, D24X40
908-1727	#600 M / 1.94 M	JT20, JT2020, JT24, JT25, JT28, JT3020, JT30, D24X40
908-4002	#600 M / 2.38 M API R	JT20, JT2020, JT24, JT25, JT28, JT3020, JT30, D24X40
908-4003	#600 M / 2.59 M	JT20, JT2020, JT24, JT25, JT28, JT3020, JT30, D24X40
908-4197	#602 F / 2.88 M API R	D33X34, D36X50
908-4233	#602 F / 2.38 M API R	D33X34, D36X50
908-4234	#650 F / 2.38 M API R	D33X34, D36X50
908-4242	#700 F / 2.38 M API R	D36X50
908-5199	#800 F / 3.50 M API R	JT7020, JT8020, JT100, D80X100
908-5210	#800 F / 3.50 M API IF	JT7020, JT8020, JT100, D80X100
908-5002	#800 M / 2.88 M API R	JT7020, JT8020, JT100, D80X100
908-5186	#800 F / 2.88 M API R	JT100
908-5004	#800 M / 3.5 M API IF	JT7020, JT8020, JT100, D80X100
908-5005	#800 M / 3.27 M	JT7020, JT8020, JT100, D80X100
908-5205	#802 F / 3.50 M API R	D80X120, D100X120, DD110
908-5211	#802 F / 3.50 M API IF	D80X120, D100X120, DD110
908-5195	#802 F / 2.88 M API R	D80X120, D100X120, DD110
908-5184	#900 F / 2.88 M API R	D50X100, D80X100
908-5200	#900 F / 3.50 M API R	JT60, D50X100, D80X100
908-5214	#900 F / 3.50 M API IF	JT60, D50X100, D80X100
908-5190	#1000 F / 2.88 M API R	D80X120, D100X120, DD110
908-5207	#1000 F / 3.50 M API R	D80X120, D100X120, DD110
908-5213	#1000 F / 3.50 M API IF	D80X120, D100X120, DD110

## CONNECTORS

Part Number	Description	Model(s)
918-0749	Hawkeye® 275 M / 1.41 F	JT9, JT920, JT920L, JT921, JT922, JT10, JT1220, D6X6, D7X11, D9X13
918-0747	Hawkeye 275 M / 1.94 M	JT9, JT920, JT920L, JT921, JT922, JT10, JT1220, D6X6, D7X11, D9X13
918-0751	Hawkeye 275 M / 2.0 M API IF	JT9, JT920, JT920L, JT921, JT922, JT10, JT1220, D6X6, D7X11, D9X13
918-0745	Hawkeye 275 M / 2.11 M	JT9, JT920, JT920L, JT921, JT922, JT10, JT1220, D6X6, D7X11, D9X13
918-0707	Hawkeye 275 M / 2.38 M API R	JT9, JT920, JT920L, JT921, JT922, JT10, JT1220, D6X6, D7X11, D9X13
918-0731	Hawkeye 275 M / SplineLok® II 350 M	JT9, JT920, JT920L, JT921, JT922, JT10, JT1220, D6X6, D7X11, D9X13
918-0729	Hawkeye 275 M / 1.62 LPT F	JT9, JT920, JT920L, JT921, JT922, JT10, JT1220, D6X6, D7X11, D9X13
918-0730	Hawkeye 275 M / 2.125 LPT F	JT9, JT920, JT920L, JT921, JT922, JT10, JT1220, D6X6, D7X11, D9X13
918-2451	Hawkeye 350 M / 1.94 M	JT1720, JT20, JT2020, D16X20, D18X20, D20X22
918-2407	Hawkeye 350 M / 2.38 M API R	JT1720, JT20, JT2020, JT24, JT25, JT28, JT2720, JT30, JT3020, D16X20, D18X20, D20X22, D24X26, D24X33, D24X40, D33X44, D36X50
918-2452	Hawkeye 350 M / 2.59 M	JT24, JT25, JT28, JT2720, JT30, JT3020, D24X26, D24X33, D24X40, D33X44, D36X50
918-2481	Hawkeye 350 M / 2.88 M API R	JT24, JT25, JT28, JT2720, JT30, JT3020, D24X26, D24X33, D24X40, D33X44, D36X50
918-2483	Hawkeye 350 M / 2.0 M API IF	JT1220, JT20, JT2020, JT24
918-2429	Hawkeye 350 M / SplineLok II 350 M	JT1720, JT20, JT2020, JT24, JT25, JT28, JT2720, JT30, JT3020, D16X20, D18X20, D20X22, D24X26, D24X33, D24X40, D33X44, D36X50
918-2479	Hawkeye 350 M / #800 M	JT7020, JT8020, JT100, D80X100
918-2426	Hawkeye 350 M / 2.125 LPT F	D16X20, D18X20, D20X22, D24X26, D24X33, D24X40, D33X44, D36X50
918-2428	Hawkeye 350 M / 1.625 LPT F	D6X6, D7X11, D9X13
918-3052	Hawkeye 390 M / 1.94 M	JT1720, JT20, JT2020, D16X20, D18X20, D20X22
918-3044	Hawkeye 390 M / 2.59 M	JT24, JT25, JT28, JT2720, JT30, JT3020, JT4020, D24X26, D24X33, D24X40, D33X44, D36X50, JT40
918-3024	Hawkeye 390 M / 2.38 M API R	JT1720, JT20, JT2020, JT24, JT25, JT28, JT2720, JT3020, JT30, D16X20, D18X20, D20X22, D24X26, D24X33, D24X40, D33X44, D36X50
918-3006	Hawkeye 390 M / 2.88 M API R	JT40, JT4020, D24X26, D24X40, D36X50, D50X100, D55X10
918-3035	Hawkeye 390 M / SplineLok II 350 M	JT1720, JT20, JT2020, JT25, JT28, JT2720, JT30, JT3020, JT40, D16X20, D18X20, D20X22, D24X26, D24X33, D24X40, D33X44, D36X50
918-3069	Hawkeye 390 M / #800 M	JT40, JT4020, D24X26, D24X40, D36X50, D50X100, D55X10
918-3071	Hawkeye 390 M / 3.27 M	JT40, JT4020, D24X26, D24X40, D36X50, D50X100, D55X10
918-3033	Hawkeye 390 M / 1.625 LPT F	D6X6, D7X11, D9X13
918-3034	Hawkeye 390 M / 2.12 LPT F	D16X20, D18X20, D20X22, D24X26, D24X33, D24X40, D33X44, D36X50
918-3624	Hawkeye 426 M / 2.38 M API R	JT1720, JT20, JT2020, JT24, JT25, JT28, JT2720, JT30, JT3020, D16X20, D18X20, D20X22, D24X26, D24X33, D24X40, D33X44, D36X50
918-3647	Hawkeye 426 M / 2.59 M	JT24, JT25, JT28, JT2720, JT30, JT3020, JT40, JT4020, D24X26, D24X33, D24X40, D33X44, D36X50
918-3606	Hawkeye 426 M / 2.88 M API R	JT40, JT4020, D24X26, D24X40, D36X50, D50X100, D55X10
918-3607	Hawkeye 426 M / 3.5 M API R	JT40, JT4020, D24X26, D24X40, D36X50, D50X100, D55X10
918-3629	Hawkeye 426 M / #900 M	JT40, JT4020, D24X26, D24X40, D36X50, D50X100, D55X10
918-3622	Hawkeye 426 M / #800 M	JT40, JT4020, D24X26, D24X40, D36X50, D50X100, D55X10

QUICK CONNECT SYSTEMS



## CONNECTORS

Part Number	Description	Model(s)
918-3634	Hawkeye® 426 M / 2.12 LPT F	D16X20, D18X20, D20X22, D24X26, D24X33, D24X40, D33X44, D36X50
908-4268	SplineLok® II 350 F / 1.94 M	JT1720, JT20, JT2020
908-4124	SplineLok II 350 F / #600 F	JT20, JT2020, JT24, JT25, JT28, JT30, JT3020, D24X40
908-4123	SplineLok II 350 F / #600 M	JT20, JT2020, JT24, JT25, JT28, JT30, JT3020, D24X40
908-4269	SplineLok II 350 F / 2.59 M	JT40, JT4020
908-4153	SplineLok II 350 M / 2.38 F API R	JT1720, JT20, JT2020, JT24, JT25, JT28, JT2720, JT30, JT3020, D16X20, D18X20, D20X22, D24X26, D24X33, D24X40, D33X44, D36X50
908-4137	SplineLok II 350 F / #800 F	JT40, JT4020, D24X26, D24X40, D36X50, D50X100, D55X10
908-4180	SplineLok II 350 F / 3.5 M API R	JT40, JT4020, D24X26, D24X40, D36X50, D50X100, D55X10
908-4188	SplineLok II 350 F / #800 M	JT40, JT4020, D24X26, D24X40, D36X50, D50X100, D55X10
908-4021*	SplineLok II 350 F / 2.12 LPT WELD-OVER	D16X20, D18X20, D20X22, D24X26, D24X33, D24X40, D33X44, D36X50
908-4171	SplineLok II 350 F / #900 M	JT40, JT4020, D24X26, D24X40, D36X50, D50X100, D55X10
908-4149	SplineLok II 350 F / 2.88 M API R	JT40, JT4020, D24X26, D24X40, D36X50, D50X100, D55X10
908-4102	SplineLok II 350 F / 2.38 M API R	JT1720, JT20, JT2020, JT24, JT25, JT28, JT2720, JT30, JT3020, D16X20, D18X20, D20X22, D24X26, D24X33, D24X40, D33X44, D36X50
400-740	1.62 LPT M / 1.41 F	D6X6, D7X11, D9X13
400-741	1.62 LPT F / 1.94 M	D6X6, D7X11, D9X13
400-742	2.12 LPT F / 1.94 M	D16X20, D18X20, D24X33
400-743	1.62 LPT M / 1.94 M	D6X6, D7X11, D9X13
908-0825	1.62 LPT M / 2.0 M API IF	D6X6, D7X11, D9X13
918-0728	1.62 LPT F / 2.38 F API R	D6X6, D7X11, D9X13
908-0790	1.62 LPT M / 2.38 M API R	D6X6, D7X11, D9X13
908-0815	1.62 LPT M / 2.11 M	D6X6, D7X11, D9X13
400-140	2.12 LPT / 1.94 LPT M	D16X20, D18X20, D20X22, D24X26, D24X33
908-4007	2.12 LPT M / 2.0 M API IF	D6X6, D7X11, D9X13
918-3632	2.12 LPT F / 2.38 API R F	D24X33, D24X40, D33X44, D36X50
908-1666	2.12 LPT M / 2.38 API R M	D16X20, D18X20, D20X22, D24X26, D24X33
908-4142	2.12 LPT M / 350 SPLK II M	D16X20, D18X20, D20X22, D24X26, D24X33, D24X40, D33X44, D36X50

\* Weld-on connector to convert 2.12 LPT to SplineLok II 350 F.

QUICK CONNECT SYSTEMS

# DIRT HOUSINGS & BITS

SOIL CONDITION CHART KEY ●=Best ○=Better ○=Good

## POWERHOUSE® XD DIRT HOUSINGS

Part Number	Diameter	Bit Pattern / Thread	Electronics	Nozzle(s)	Model(s)
908-0680	2"	3 Hole / 12 mm / DW / 1.10	SBRP / 88B	1	JT5, JT520
400-3323	2.38"	3 Hole 12mm / DW / 2.0 IF	15T	1	JT5, JT520
400-3139	2.5"	5 Hole / 12 mm / DW / 2.0" IF	15T / 17T	1	JT10
400-3140	2.75"	5 Hole / 12 mm / DW / 2.0" IF	15T / 17T	1	JT1220
400-3141	3"	5 Hole / 12 mm / DW / 2.38" REG	15T / 17T	2	JT20
400-3142	3.25"	6 Hole / 16 mm / DW / 2.38" REG	15T / 17T	2	JT24, JT25, JT28, JT30
400-3143	3.75"	6 Hole / 20 mm / DW / 2.88" REG	15T / 17T	2	JT40
400-3144	4.25"	6 Hole / 20 mm / DW / 2.88" REG	15T / 17T	2	JT60
400-3145	4.75"	6 Hole / 20 mm / DW / 3.5" IF	BHL Series	2	JT100, DD110
908-0670	2"	5 Hole / 3/8" / VM / #200	DCI® Mini	1	D6X6, D7X11, D9X13
400-3146	2.55"	6 Hole / 1/2" / VM / 2.0" IF	15T / 17T	1	D6X6, D7X11, D9X13
400-3147	2.75"	6 Hole / 1/2" / VM / 2.0" IF	15T / 17T	1	D6X6, D7X11, D9X13
400-3148	3"	6 Hole / 1/2" / VM / 2.38" REG	15T / 17T	2	D16X20, D18X20, D20X22
400-3149	3.25"	6 Hole / 1/2" / VM / 2.38" REG	15T / 17T	2	D24X26, D24X33, D24X40, D33X44, D36X50
400-3150	4.25"	6 Hole / 5/8" / VM / 2.88" REG	15T / 17T	2	D50X100, D55X100, D75X100, D80X100, D100X120
400-3151	4.25"	6 Hole / 5/8" / VM / 2.88" REG	15T / 17T	2	D50X100, D55X100, D75X100, D80X100, D100X120



Vermeer® Compatible

## STEEP TAPER TUFF BIT

SOIL CONDITION CHART KEY ●=Best ○=Better ○=Good

Part Number	Cut	Bolt Pattern	Bolt Size	Thickness	Bend Angle
400-120	4" / 101.6 mm	5 Hole DW	12 mm	3/4"	10°
400-122	4" / 101.6 mm	6 Hole DW	16 mm	3/4"	10°
400-124	5" / 127 mm	6 Hole DW	16 mm	3/4"	10°
400-1893	5" / 127 mm	6 Hole DW	20 mm	1"	10°
400-431	6" / 152.4 mm	6 Hole DW	20 mm	1"	10°
400-1895	8" / 203.2 mm	6 Hole DW	20 mm	1"	10°
400-1530	4" / 101.6 mm	6 Hole VM	1/2"	3/4"	10°
400-1885	3.5" / 88.9 mm	6 Hole VM	1/2"	5/8"	10°
400-1532	5" / 127 mm	6 Hole VM	1/2"	3/4"	10°
400-1887	5" / 127 mm	6 Hole VM	5/8"	1"	10°
400-1889	6" / 152.4 mm	6 Hole VM	5/8"	1"	10°
400-1891	8" / 203.2 mm	6 Hole VM	3/4"	1"	10°
400-2659	4" / 101.6 mm	6 Hole DW	16 mm	3/4"	10°
400-2657	4" / 101.6 mm	5 Hole DW	12 mm	3/4"	10°
400-2661	5" / 127 mm	6 Hole DW	16 mm	3/4"	10°
400-2665	4" / 101.6 mm	6 Hole VM	1/2"	3/4"	10°
400-2663	3.5" / 88.9 mm	6 Hole VM	1/2"	5/8"	10°
400-2667	5" / 127 mm	6 Hole VM	1/2"	3/4"	10°

## HOUSING ACCESSORIES

Diameter	Housing	Lid Pin	Coil Pin	Lid Bolt	Bit Bolt
2	908-0680		911-2450	908-0671	107-277
2.5	908-0880	908-0852	906-2405	908-0833	107-277
2.75	908-1080	908-0852	906-2405	908-0833	107-277
3	908-1680	906-2652	906-2405	906-2633	107-277
3.25	908-4080	906-2652	906-2405	906-2633	106-681
3.75	908-4082	906-2652	906-2405	906-2633	107-284
4.25	908-5280	906-2652	906-2405	906-2633	107-284
4.75	906-5357	906-2652	906-2405	906-2633	107-284
2	908-0670		911-2450	908-0671	105-1743
2.5	908-0870	908-0852	906-2405	908-0833	105-910
2.75	908-1070	908-0852	906-2405	908-0833	105-910
3	908-1670	906-2652	906-2405	906-2633	105-910
3.25	908-4070	906-2652	906-2405	906-2633	105-910
4.25	908-5270	906-2652	906-2405	906-2633	105-1744
4.25	908-5272	906-2652	906-2405	906-2633	105-1745



## OMNI BIT™

SOIL CONDITION CHART KEY ●=Best ○=Better ○=Good

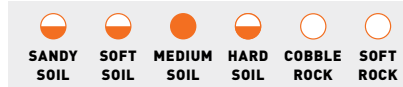
Part Number	Description	Width	Bolt Pattern	Bolt Size	Thickness
400-2749	3-3 / 12-50-10 Omni Bit	3" / 76.2 mm	3 Hole DW	12 mm	.5"
400-2751	3.5-5 / 12-75-10 Omni Bit	3.5" / 88.9 mm	5 Hole DW	12 mm	.75"
400-2753	4-5 / 12-75-10 Omni Bit	4" / 101.6 mm	5 Hole DW	12 mm	.75"
400-10107	4-3 / 12-50-10 Omni Bit	4" / 101.6 mm	3 Hole DW	12 mm	.5
400-2755	4.5-5 / 12-75-10 Omni Bit	4.5" / 114.3 mm	5 Hole DW	12 mm	.75"
400-2757	4-6 / 16-75-10 Omni Bit	4" / 101.6 mm	6 Hole DW	16 mm	.75"
400-2759	4.5-6 / 16-75-10 Omni Bit	4.5" / 114.3 mm	6 Hole DW	16 mm	.75"
400-2761	5-6 / 16-75-10 Omni Bit	5" / 127 mm	6 Hole DW	16 mm	.75"
400-2763	6-6 / 20-1-10 Omni Bit	6" / 152.4 mm	6 Hole DW	20 mm	1"
400-2765	7-6 / 20-1-10 Omni Bit	7" / 177.8 mm	6 Hole DW	20 mm	1"
<b>VERMEER®</b>					
400-3092	4-6 / .5-75-10 Omni Bit	4" / 101.6 mm	6 Hole VM	12.7 mm	.75"
400-3123	5-6 / .5-75-10 Omni Bit	5" / 127 mm	6 Hole VM	12.7 mm	.75"
400-3125	5-6 / .625-75-10 Omni Bit	5" / 127 mm	6 Hole VM	12.7 mm	.75"



DIRT HOUSINGS & BITS

DIRT HOUSINGS & BITS

## TORNADO BIT



Part Number	Cut	Bolt Pattern	Bolt Size	Thickness	Bend Angle
400-1929	3" / 76.2 mm	5 Hole DW	12 mm	5/8"	10°
400-1925	3.5" / 88.9 mm	5 Hole DW	12 mm	5/8"	10°
400-1927	4" / 101.6 mm	5 Hole DW	12 mm	5/8"	10°
400-1931	4" / 101.6 mm	5 Hole DW	12 mm	3/4"	10°
400-1585	5" / 127 mm	5 Hole DW	12 mm	3/4"	10°
400-1933	4.5" / 114.3 mm	6 Hole DW	16 mm	3/4"	10°
400-1935	5" / 127 mm	6 Hole DW	16 mm	3/4"	10°
400-1063	6" / 125.4 mm	6 Hole DW	16 mm	3/4"	10°
400-1937	6.5" / 165.1 mm	6 Hole DW	16 mm	3/4"	10°
400-1939	5" / 127 mm	6 Hole DW	20 mm	1"	10°
400-1941	6" / 125.4 mm	6 Hole DW	20 mm	1"	10°
400-1901	8" / 203.2 mm	6 Hole DW	20 mm	1"	10°
400-1897	3.5" / 88.9 mm	6 Hole VM	1/2"	5/8"	10°
400-1514	3.5" / 88.9 mm	6 Hole VM	1/2"	3/4"	10°
400-1516	4" / 101.6 mm	6 Hole VM	1/2"	3/4"	10°
400-1518	5" / 127 mm	6 Hole VM	1/2"	1"	10°
400-1520	6" / 125.4 mm	6 Hole VM	1/2"	3/4"	10°
400-1554	5" / 127 mm	6 Hole VM	5/8"	1"	10°
400-1558	6" / 125.4 mm	6 Hole VM	5/8"	1"	10°
400-1899	8" / 203.2 mm	6 Hole VM	3/4"	1"	10°



Vermeer® Compatible

## TUFF BIT



Part Number	Cut	Bolt Pattern	Bolt Size	Thickness	Bend Angle
400-2963*	3" / 76.2 mm	3 Hole DW	12 mm	1/2"	10°
369-727**	3" / 76.2 mm	3 Hole DW	12 mm	1/2"	0°
369-729	3" / 76.2 mm	5 Hole DW	12 mm	5/8"	10°
401-334	3.5" / 88.9 mm	5 Hole DW	12 mm	5/8"	10°
369-731	4" / 101.6 mm	5 Hole DW	12 mm	5/8"	10°
369-733	5" / 127 mm	5 Hole DW	12 mm	5/8"	10°
400-172***	4.5" / 114.3 mm	6 Hole DW	16 mm	3/4"	10°
369-735	5" / 127 mm	6 Hole DW	16 mm	3/4"	10°
369-737	6.4" / 162.56 mm	6 Hole DW	16 mm	3/4"	10°
369-739	5" / 127 mm	6 Hole DW	20 mm	1"	10°
369-741	6.5" / 165.1 mm	6 Hole DW	20 mm	1"	10°
369-743	8" / 203.2 mm	6 Hole DW	20 mm	1"	10°
400-1871	2.5" / 63.5 mm	5 Hole VM	3/8"	1/2"	0°
400-1877	3.5" / 88.9 mm	6 Hole VM	1/2"	5/8"	10°
400-1522	4" / 101.6 mm	6 Hole VM	1/2"	3/4"	10°
400-1524	5" / 127 mm	6 Hole VM	1/2"	3/4"	10°
400-1881	5" / 127 mm	6 Hole VM	5/8"	1"	10°
400-1528	8" / 203.2 mm	6 Hole VM	5/8"	1"	10°
400-1560	6" / 152.4 mm	6 Hole VM	5/8"	1"	10°
400-1526	6.5" / 165.1 mm	6 Hole VM	1/2"	3/4"	10°
400-1879	8" / 203.2 mm	6 Hole VM	3/4"	1"	10°



DIRT HOUSINGS & BITS



DIRT HOUSINGS & BITS

# TRIHAWK® HD HOUSINGS

SOIL CONDITION CHART KEY ●=Best ◐=Better ○=Good

## TRIHAWK® HD HOUSINGS

Part Number	Diameter	Thread	Spline Size	Electronics	Model(s)
400-3312	2.75"	2.0 API IF	2.125"	15T/17T	JT9, JT922, JT10, JT1220, D6X6, D7X11, D9X13
400-3313	3"	2.38 API R	2.125"	15T/17T	"JT1220, JT1720M1, JT20, JT2020, D6X6, D7X11, D9X13, D16X20, D18X20, D20X22"
400-3314	3.5"	2.38 API R	2.5"	15T/17T	JT25, JT28, JT2720M1, JT30, JT3020, JT32, JT4020, D24X26, D24X33, D24X40, D33X44, D36X50
400-3315	3.75"	2.88 API R	2.5"	15T/17T	JT40
400-3316	4.25"	2.88 API R	3.337"	15T/17T	JT60, JT7020, JT8020, D33X44, D36X50, D50X100, D55X100, D75X100, D80X100, D80X120
400-10031	4.75"	3.5API IF	3.375"	15T/17T/19T	JT7020M1, JT8020M1, JT100, JT120, D50X100, D55X100, D75X100, D80X100, D80X120, DD110



## HOUSING ACCESSORIES

Diameter	Housings	Lid	Lid Pin	Coil Pin	Flow Check	O-Ring	Beacon Buddy
2.75"	400-3312	302-9855	908-0852	906-2405	906-2638	906-1604	159-461
3"	400-3313	302-9855	908-0852	906-2405	906-2638	906-1604	159-461
3.5"	400-3314	302-9856	906-2652	906-2405	906-2638	906-2404	159-461
3.75"	400-3315	302-9856	906-2652	906-2405	906-2638	906-2404	159-461
4.25"	400-3316	302-9856	906-2652	906-2405	906-5338	906-5004	159-461
4.75"	400-10031	400-10243	906-2652	908-0019	906-5338	906-5004	159-461

## TRIHAWK I



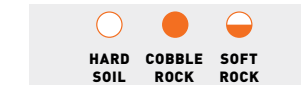
Part Number	Cut	Spline	Replacement Teeth	Drill Size
906-1792	3.75" / 95.25 mm	2.125"	906-1642 short	6K - 12K Drills
906-1626	4.44" / 112.77 mm	2.125"	906-2434 short / 906-2437 long	16K - 20K Drills
906-1627 HD	4.5" / 114.3 mm	2.125"		16K - 20K Drills
906-2426	5.12" / 130.04 mm	2.5"	906-2446 med / 906-2494 long	24K - 40K Drills
906-2427 HD	5.12" / 130.04 mm	2.5"	906-2446 med / 906-2494 long	24K - 40K Drills
906-5026	6.12" / 157.48 mm	3.375"	906-5082 med / 906-5090 long	50K - 100K Drills
906-5027 HD	6.12" / 155.44 mm	3.375"		50K - 100K Drills
906-1827	TriHawk I Pullback Tool			5K - 12K Drills
906-2627	TriHawk I Pullback Tool			16K - 40K Drills

## TRIHAWK® III



Part Number	Cut	Spline Size	Replacement Teeth	Drill Size
906-1719	4.38" / 111.25 mm	2.125"	906-1713	16K - 20K Drills
906-2519	5.5" / 139.7 mm	2.5"	906-2516	24K - 40K Drills
906-5119	6.6" / 167.64 mm	3.375"	906-5116	50K - 100K Drills
906-1513	10.0" / 254 mm	4.5 F API IF	906-1512	150K - 300K Drills
906-1527	12.5" / 317.5 mm	6.625 F FH	906-1530	500K Drills +
906-1723	TriHawk III Pull Back		Use with	906-1719
906-2523	TriHawk III Pull Back		Use with	906-2519

## TRIHAWK IV



Part Number	Cut	Spline Size	Drill Size
906-1730	4.38" / 111.25 mm	2.125"	16K - 20K Drills
906-2530	5.5" / 139.7 mm	2.5"	24K - 40K Drills
906-5130	6.6" / 167.64 mm	3.375"	50K - 100K Drills

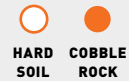


TRIHAWK HD HOUSINGS & BITS

TRIHAWK HD HOUSINGS & BITS

# ROCKMASTER® AT HOUSINGS & BITS

## TRIHAWK V



Part Number	Cut	Spline Size	Drill Size
906-1771	3.88" / 98.55 mm	2.125"	16K - 20K Drills
906-2571	4.8" / 121.92 mm	2.5"	24K - 40K Drills
906-5171	7" / 177.8 mm	3.375"	50K - 100K Drills
906-1523	9" / 228.6 mm	4.5 F API IF	150K - 300K Drills
906-0825	TriHawk V Pullback		5K - 12K Drills
906-1825	TriHawk V Pullback		16K - 20K Drills
906-2625	TriHawk V Pullback		24K - 40K Drills

## TRIHAWK REAMER BIT



Part Number	Cut	Spline Size	Drill Size
906-1812	6" / 152.4 mm	2.125"	16K - 20K Drills
906-2712	6" / 152.4 mm	2.5"	24K - 40K Drills

## TRIHAWK® DIRT BIT ADAPTER



Vermeer®  
Compatible

Part Number	Housing Diameter	Spline Size	Bolt Pattern	Nozzles
906-1796	3" TriHawk HD	2.125"	5 Hole DW / 12 mm	2
906-2697	3.5" TriHawk HD	2.5"	6 Hole DW / 16 mm	2
906-2698	3.5" TriHawk HD	2.5"	6 Hole DW / 20 mm	2
906-5296	4.25" TriHawk HD	3.375"	6 Hole DW / 20 mm	2
906-1665	3" TriHawk HD	2.125"	6 Hole VM (1/2" Bolt)	2
906-2465	3.5" TriHawk HD	2.5"	6 Hole VM (1/2" Bolt)	2
906-5165	4.25" TriHawk HD	3.375"	6 Hole VM (5/8" Bolt)	2
906-5166	4.25" TriHawk HD	3.375"	6 Hole VM (3/4" Bolt)	2

## TRIHAWK® PULLERS



Part Number	Description	Spline Size	Drill Size
906-1593	TriHawk HSG Pull Tab	2.125" F	10K - 20K Drills
906-2493	TriHawk HSG Pull Tab	2.5" F	24K - 40K Drills

## ROCKMASTER® AT HOUSINGS

Part Number	Style	Description	Electronics	Model(s)	Bolts For Lid
AT30					
401-329	3.75" RockMaster 2 *	2.77 DS / AT30 / 2.88 API R	15T/17T	AT2070, AT30	106-891 x8
350-1254	4.75" RockMaster 2 *	2.77 DS / AT30 / 2.88 API R	15T/17T	AT2070, AT30	106-891 x8
400-3162	4.5" RockMaster 2 *	2.77 DS / AT30 / 2.88 API R	15T/17T	AT2070, AT30	106-891 x8
400-3163	4.5" SwitchBack 2 *	2.77 DS / AT30 / 2.88 API R	15T/17T	AT2070, AT30	106-891 x8
AT32					
400-3322	5" SwitchBack 2.3*	2.36 DS / AT32 / 2.88 & 3.5 API R	15T/17T	AT32	105-2657 x1
400-3311	5" SwitchBack 2.3*	2.36 DS / AT32 / 2.88 & 3.5 API R	19T	AT32	105-2657 x1
AT40					
400-10030	5" SwitchBack 2.5*	2.95 DS / AT40 / 2.88 & 3.5 API R	15T/17T	AT40	105-2657 x1
400-10102	5" SwitchBack 2.3*	2.95 DS / AT40 / 2.88 & 3.5 API R	19T	AT40	105-2657 x1
400-10126	5" RockMaster 2.5*	2.95 DS / AT40 / 3.5 API R	15T/17T	AT40	105-2657 x1
AT60					
400-10270	5.5" RockMaster 2 *	3.25 DS / AT60 / 3.5 API R	15T/17T	AT60	105-2657 x1
400-10271	5.5" RockMaster 2 *	3.25 DS / AT60 / 3.5 API R	19T	AT60	105-2657 x1
AT100					
400-10272	5.5" RockMaster 2 *	3.44 DS / AT100 / 3.5 API R	15T/17T	AT100	105-2657 x1
400-10273	5.5" RockMaster 2 *	3.44 DS / AT100 / 3.5 API R	19T	AT100	105-2657 x1
AT120					
400-10275	5.5" RockMaster 2 *	3.36 DS / AT120 / 3.5 API R	15T/17T	AT120	105-2657 x1
400-10276	5.5" RockMaster 2.4 *	3.36 DS / AT120 / 4.5 API R	15T/17T	AT120	105-2657 x1
400-10277	5.5" RockMaster 2 *	3.36 DS / AT120 / 3.5 API R	19T	AT120	105-2657 x1
400-10278	5.5" RockMaster 2.4 *	3.36 DS / AT120 / 4.5 API R	19T	AT120	105-2657 x1
TRANSITION SUBS					
400-10140	3.36 DS M / 3.36 DS F	AT T-SUB ASSY (2.36DS M / F)		AT32	
400-10143	2.29 DS M / 2.29 DS F	AT T-SUB ASSY (2.95DS M / F)		AT40	

Note: DCI® isolation kit is 908-4306



## ALL TERRAIN SWITCHBACK ACCESSORIES

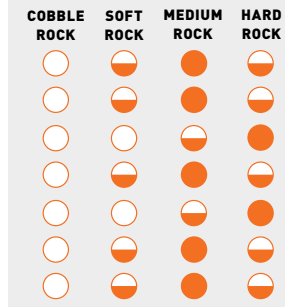
Part Number	Description	Model(s)
400-3094	SwitchBack Adapter (2-7/8" API-Reg)	AT30
400-3100	10K SwitchBack Swivel Assembly	AT30
400-3169	SwitchBack Adapter (3.5 API R)	AT32, AT40
400-3170	SwitchBack Adapter (2.88 API R)	AT32, AT40
400-3175	5" SwitchBack Swivel (10K)	AT32, AT40

TRIHAWK HD HOUSINGS & BITS

ROCKMASTER AT HOUSINGS & BITS



## ROCKMASTER® BIT



Part Number	Diameter	IADC Code	Thread
400-3351	4.75 in	216	2.875 API R
400-3352	4.75 in	527	2.875 API R
400-3353	5.50 in	216	2.875 API R
400-3354	5.50 in	537	2.875 API R
400-3355	5.50 in	637	2.875 API R
400-3356	5.63 in	216	2.875 API R
400-3357	5.63 in	537	2.875 API R
400-3358	5.63 in	537	3.5 API R
400-3359	5.63 in	637	2.875 API R
400-3360	5.63 in	637	3.5 API R
400-3361	6.00 in	537	2.875 API R
400-3362	6.00 in	537	3.5 API R
400-3363	6.00 in	637	2.875 API R
400-3364	6.00 in	637	3.5 API R
400-3365	6.50 in	216	3.5 API R
400-3366	6.50 in	537	3.5 API R
400-3367	6.50 in	637	3.5 API R
400-3368	7.88 in	537	4.5 API R
400-3369	7.88 in	637	4.5 API R
400-3370	8.50 in	537	4.5 API R
400-3371	8.50 in	637	4.5 API R



### IADC NUMBER DESIGNATION SYSTEM

First Number Type of Bit	Second Number Formation Hardness	Third Number Bit Features
1 - Steel Tooth, Soft Formation	1 - Soft Formation	1 - Standard Open Bearing
2 - Steel Tooth, Medium Formation	1 - Soft Formation	2 - Standard Open Bearing/Air Cooled
3 - Steel Tooth, Hard Formation	2 - Medium-Soft Formation	3 - Standard Open Bearing/Gage Protected
4 - Tungsten Carbide Insert Bits	2 - Medium-Soft Formation	4 - Sealed Roller Bearing
5 - Tungsten Carbide Insert Bits, Soft Formation	3 - Medium-Hard Formation	5 - Sealed Roller Bearing/Gage Protected
6 - Tungsten Carbide Insert Bits, Medium-Soft Formation	3 - Medium-Hard Formation	6 - Sealed Journal Bearing
6 - Tungsten Carbide Insert Bits, Hard Formation	4 - Hard Formation	7 - Sealed Journal Bearing/Gage Protected
7 - Tungsten Carbide Insert Bits, Medium-Hard Formation	4 - Hard Formation	7 - Sealed Journal Bearing/Gage Protected

## NOZZLES

### ROCKMASTER® AND TRI-CONE BIT NOZZLES

Part Number	Bit Size Class	Nozzle Size	Description
400-3372	B	-04	4.75" -5.63" TRICONE NOZZLE, -04
400-3373	B	-05	4.75" -5.63" TRICONE NOZZLE, -05
400-3374	B	-06	4.75" -5.63" TRICONE NOZZLE, -06
400-3375	B	-08	4.75" -5.63" TRICONE NOZZLE, -08
400-3376	B	-12	4.75" -5.63" TRICONE NOZZLE, -12
400-3377	F	-04	5.88" -6.75" TRICONE NOZZLE, -04
400-3378	F	-05	5.88" -6.75" TRICONE NOZZLE, -05
400-3379	F	-06	5.88" -6.75" TRICONE NOZZLE, -06
400-3380	F	-08	5.88" -6.75" TRICONE NOZZLE, -08
400-3381	F	-12	5.88" -6.75" TRICONE NOZZLE, -12
400-3382	H	-05	7.88" - 8.88" TRICONE NOZZLE, -05
400-3383	H	-06	7.88" - 8.88" TRICONE NOZZLE, -06
400-3384	H	-08	7.88" - 8.88" TRICONE NOZZLE, -08
400-3385	H	-12	7.88" - 8.88" TRICONE NOZZLE, -12
400-3386	H	-16	7.88" - 8.88" TRICONE NOZZLE, -16
400-3387	H	-20	7.88" - 8.88" TRICONE NOZZLE, - 20

Nozzle size is based on 32nds of an inch. For instance, a -04 nozzle is 4/32" (1/8" diameter hole), while a -16 is 16/32" (1/2" diameter hole).



# UNIVERSAL HOUSINGS & BITS



## UNIVERSAL HD HOUSINGS

Part Number	Diameter	Front Threads	Rear Threads	Model(s)
400-3179	2.75"	2.0 IF	2.0 IF	JT10
908-1690	3.25"	2.38 API R F	2.38 API R F	JT20, JT2020, D16x20, D18x20, D20X22, D24X26, D24X33
908-4290	3.75"	2.38 API R F	2.38 API R F	JT25, JT28, JT30, JT3020, AT30, D24X40, D33X44, D36X50
908-4390	4.25"	2.88 API R F	2.88 API R F	JT40, JT60, DD110
908-5290	4.75"	3.5 API IF F	3.5 API IF F	AT40, AT60, JT7020, JT8020, JT100, AT100, D50X100, D55X100, D60X90, D75X100, D80X10, D100X120, DD110
400-1426*	4.75"	3.5 API IF	3.5 API IF	AT40, AT60, JT7020, JT8020, JT100, AT100, D50X100, D55X100, D60X90, D75X100, D80X10, D100X120, DD110
400-1000**	4.75"	3.5 API IF	3.5 API IF	AT40, AT60, JT7020, JT8020, JT100, AT100, D50X100, D55X100, D60X90, D75X100, D80X10, D100X120, DD110
908-6190	6.5"	4.5 API IF M	4.5 API IF F	150K - 330K
908-8090	8"	6.625 API FH M	6.625 API FH F	400K - 1000K

\* BHL Electronics Only.

\*\* Not wireline compatible.

Note: These housings will accommodate Subsite® Electronics and DCI® Electronics, including the 19" sonde.

## UNIVERSAL HD HOUSING ADAPTERS

Part Number	Front Threads	Spline Size	Bolt Size	Housing	Adapter
906-1810	2.38 API M	2.125"		908-1690	Universal to TriHawk®
906-2585	2.38 API R M	2.5"		908-4290 / 908-1690	Universal to TriHawk
906-2478	2.88 API R M	2.5"		908-4290 / 908-1690	Universal to TriHawk
906-5310	3.5 API IF M	3.375"		908-5290	Universal to TriHawk
906-1720	2.38 API R M		12 mm	908-1690	Bit adapter
906-2637	2.38 API R M		16 mm	908-1690	Bit adapter
906-2636	2.38 API R M		20 mm	908-4290	Bit adapter
906-5312	2.88 API R M		20 mm	908-4390	Bit adapter
906-5298	3.5 API IF M		20 mm	908-5290	Bit adapter
400-3186	2.0 IF		12 mm	908-0990	Bit adapter

## UNIVERSAL HD HOUSING ACCESSORIES

Diameter	Housing	Lid	Lid Pin	Coil Pin	Lid Bolt
3.25	908-1690	908-4283	906-2652	906-2405	906-2633
3.75	908-4290	908-4283	906-2652	906-2405	906-2633
4.25	908-4390	908-4283	906-2652	906-2405	906-2633
4.75	908-5290	908-4283	906-2652	908-0019	906-2633
6.5	908-6190	908-4283	906-2652	906-2409	906-2633
8	908-8090	908-4283	906-2652	906-2409	906-2633

## BITS SOIL CONDITION CHART

Key ● =Best ◐ =Better ○ =Good

	Sandy Soil	Soft Soil	Medium Soil	Hard Soil	Cobble Rock	Soft Rock	Medium Rock	Hard Rock
Omni Bit	●	●	●	●	○	○		
Tornado Bit	◐	◐	●	◐	○	○		
Tuff Bit	◐	●	●	●	◐	○		
TriHawk® I		○	◐	●	◐	●		
		○	○	◐	◐	●		
TriHawk IV				○	●	◐		
				○	●			
TriHawk Reamer Bit	●	●	●	◐	○			

## SOIL TYPE DESCRIPTION CHART

<b>Sandy Soil</b>	Sugar sand, blow sand or other solids where sand is the predominant component
<b>Soft Soil</b>	Sandy loam
<b>Medium Soil</b>	Loams, loamy clays
<b>Hard Soil</b>	Packed clays, gumbo, all compacted soils
<b>Cobble Rock</b>	Chunk rock, glacier till, cobble, gravel, flat river stone
<b>Soft Rock</b>	Sandstone, shale, coral, caliche, chalk
<b>Medium Rock</b>	Limestone, caliche, sandstone, shale
<b>Hard Rock</b>	Granite, schist, marble, hard limestone

# BACKREAMERS

SOIL CONDITION CHART

KEY ●=Best ◐=Better ○=Good

## BACKREAMERS SOIL CONDITION CHART

Key ●=Best ◐=Better ○=Good

	Sandy Soil	Soft Soil	Medium Soil	Hard Soil	Cobble Rock	Soft Rock	Medium Rock	Hard Rock
Compact Fluted HD	○	○	●	◐		○		
Kodiak™ HD			○	◐	●	◐		
Beavertail HD	◐	●	●	●				
Warthog™ HD		○	◐	●		○		
RockMaster®					○	●		●
Sandhog HD	●	◐	○					
Rock Monster™ HD						●	●	◐
Swab				●	◐			
EZ			◐	●	○			

## SOIL TYPE DESCRIPTION CHART

<b>Sandy Soil</b>	Sugar sand, blow sand or other solids where sand is the predominant component
<b>Soft Soil</b>	Sandy loam
<b>Medium Soil</b>	Loams, loamy clays
<b>Hard Soil</b>	Packed clays, gumbo, all compacted soils
<b>Cobble Rock</b>	Chunk rock, glacier till, cobble, gravel, flat river stone
<b>Soft Rock</b>	Sandstone, shale, coral, caliche, chalk
<b>Medium Rock</b>	Limestone, caliche, sandstone, shale
<b>Hard Rock</b>	Granite, schist, marble, hard limestone

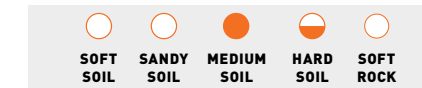
## FLANGED SWIVEL/STATIC PLATE



190-2615

Part Number	Description
190-2359	12K Swivel Kit (12K Clevis)
190-2360	12K Swivel Kit (12K Tab)
190-2361	20K Swivel Kit (20K Clevis)
190-2362	20K Swivel Kit (20K Tab)
190-2363	30K Swivel Kit (30K Clevis)
190-2364	30K Swivel Kit (30K Tab)
190-2365	40K/60K Swivel Kit (40K Clevis)
190-2366	40K/60K Swivel Kit (40K Tab)
190-2367	100K Swivel Kit (100K Clevis)
190-2368	100K Swivel Kit (100K Tab)
190-2613	12K Static Kit (12K Tab)
400-2368	12K Static Kit (20K Tab)
190-2614	20K Static Kit (20K Tab)
190-2615	30K Static Kit (30K Tab)
190-2616	40K/60K Static Kit (40K Tab)
190-2617	100K Static Kit (100K Tab)

## COMPACT FLUTED HD BACKREAMERS

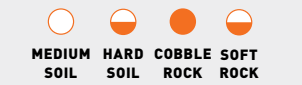


Part Number	Cut	Shaft	Description	NPT/Orifice/Nozzle Qty.	Model(s)
400-2652	4.5" / 114.3 mm	2.0"	1.10-5 F / 12K FLG	1/4" / .188 - 4	5K
400-2543	4.5" / 114.3 mm	2.75"	2.0 API IF F / 12K FLG	1/4" / .188 - 4	9K - 20K
400-2544	6.5" / 165.1 mm	2.75"	2.0 API IF F / 12K FLG	1/4" / .188 - 9	9K - 20K
400-2545	8" / 203.2 mm	2.75"	2.0 API IF F / 20K FLG	1/4" / .188 - 12	9K - 20K
400-2546	10" / 254 mm	2.75"	2.0 API IF F / 20K FLG	1/4" / .188 - 12	9K - 20K
400-2547	12" / 304.8 mm	2.75"	2.0 API IF F / 20K FLG	1/4" / .188 - 15	9K - 20K
400-2683	6.5" / 165.1 mm	3.25"	2.38 API R F / 20K FLG	1/4" / .188 - 6	16K - 36K
400-2396	8" / 203.2 mm	3.25"	2.38 API R F / 20K FLG	1/4" / .188 - 12	16K - 36K
400-2397	10" / 254 mm	3.25"	2.38 API R F / 20K FLG	1/4" / .188 - 12	16K - 36K
400-2398	12" / 304.8 mm	3.25"	2.38 API R F / 30K FLG	1/4" / .188 - 15	16K - 36K
400-2399	14" / 355.6 mm	3.25"	2.38 API R F / 30K FLG	1/4" / .188 - 18	16K - 36K
400-2400	16" / 406.4 mm	3.25"	2.38 API R F / 30K FLG	1/4" / .188 - 18	16K - 36K
400-2401	18" / 457.2 mm	3.25"	2.38 API R F / 30K FLG	1/4" / .188 - 18	16K - 36K
400-2485	8" / 203.2 mm	4.25"	2.88 API R F / 20K FLG	1/4" / .188 - 12	40K - 60K
400-2486	10" / 254 mm	4.25"	2.88 API R F / 20K FLG	1/4" / .188 - 12	40K - 60K
400-2487	12" / 304.8 mm	4.25"	2.88 API R F / 30K FLG	1/4" / .188 - 15	40K - 60K
400-2488	14" / 355.6 mm	4.25"	2.88 API R F / 40K FLG	1/4" / .188 - 18	40K - 60K
400-2489	16" / 406.4 mm	4.25"	2.88 API R F / 40K FLG	1/4" / .188 - 18	40K - 60K
400-2490	18" / 457.2 mm	4.25"	2.88 API R F / 40K FLG	1/4" / .188 - 18	40K - 60K
400-2491	12" / 304.8 mm	4.75"	3.5 API IF F / 30K FLG	1/4" / .188 - 15	70K - 100K
400-2492	14" / 355.6 mm	4.75"	3.5 API IF F / 100K FLG	1/4" / .188 - 19	70K - 100K
400-2493	16" / 406.4 mm	4.75"	3.5 API IF F / 100K FLG	1/4" / .188 - 19	70K - 100K
400-2494	18" / 457.2 mm	4.75"	3.5 API IF F / 100K FLG	1/4" / .188 - 19	70K - 100K
400-2495	20" / 508 mm	4.75"	3.5 API IF F / 100K FLG	1/4" / .188 - 22	70K - 100K
400-2496	22" / 558.8 mm	4.75"	3.5 API IF F / 100K FLG	1/4" / .188 - 22	70K - 100K
400-2497	24" / 609.6 mm	4.75"	3.5 API IF F / 100K FLG	1/4" / .188 - 25	70K - 100K
400-2498	26" / 660.4 mm	4.75"	3.5 API IF F / 100K FLG	1/4" / .188 - 18	70K - 100K

Note: Swivel and static plate sold separately.



## KODIAK™ HD



Part Number	Cut	Shaft	Description	NPT/Orifice/Nozzle Qty.	Model(s)
400-3296	8"	2.75"	2.0 API IF F / 12K FLG	1/4" / .250 - 12	9K - 20K
400-3297	10"	2.75"	2.0 API IF F / 20K FLG	1/4" / .250 - 15	9K - 20K
400-3298	12"	2.75"	2.0 API IF F / 20K FLG	1/4" / .250 - 18	9K - 20K
400-3290	8"	3.25"	2-3/8 API R F / 12K FLG	1/4" / .188 - 12	16K - 36K
400-3291	10"	3.25"	2-3/8 API R F / 20K FLG	1/4" / .188 - 15	16K - 36K
400-3292	12"	3.25"	2-3/8 API R F / 20K FLG	1/4" / .188 - 18	16K - 36K
400-3293	14"	3.25"	2-3/8 API R F / 30K FLG	1/4" / .188 - 21	16K - 36K
400-3294	16"	3.25"	2-3/8 API R F / 30K FLG	1/4" / .188 - 24	16K - 36K
400-3295	18"	3.25"	2-3/8 API R F / 30K FLG	1/4" / .188 - 27	16K - 36K
400-3279	10"	4.25"	2-7/8 API R F / 30K FLG	1/4" / .188 - 9	40K - 60K
400-3280	12"	4.25"	2-7/8 API R F / 40K FLG	1/4" / .188 - 15	40K - 60K
400-3281	14"	4.25"	2-7/8 API R F / 40K FLG	1/4" / .188 - 19	40K - 60K
400-3282	16"	4.25"	2-7/8 API R F / 40K FLG	1/4" / .188 - 22	40K - 60K
400-3283	18"	4.25"	2-7/8 API R F / 40K FLG	1/4" / .188 - 25	40K - 60K
400-3251	20"	4.25"	2-7/8 API R F / 40K FLG	1/4" / .188 - 22	40K - 60K
400-3284	24"	4.25"	2-7/8 API R F / 40K FLG	1/4" / .188 - 25	40K - 60K
400-3285	28"	4.25"	2-7/8 API R F / 40K FLG	1/4" / .188 - 28	40K - 60K
400-3267	12"	4.75"	3-1/2" IF F / 30K FLG	1/4" / .250 - 12	70K - 100K
400-3268	14"	4.75"	3-1/2" IF F / 40K FLG	1/4" / .250 - 16	70K - 100K
400-3269	16"	4.75"	3-1/2" IF F / 100K FLG	1/4" / .250 - 19	70K - 100K
400-3270	18"	4.75"	3-1/2" IF F / 100K FLG	1/4" / .250 - 22	70K - 100K
400-3271	20"	4.75"	3-1/2" IF F / 100K FLG	1/4" / .250 - 22	70K - 100K
400-3272	24"	4.75"	3-1/2" IF F / 100K FLG	1/4" / .250 - 22	70K - 100K
400-3273	28"	4.75"	3-1/2" IF F / 100K FLG	1/4" / .250 - 25	70K - 100K
400-3274	30"	4.75"	3-1/2" IF F / 100K FLG	1/4" / .250 - 28	70K - 100K
400-3275	34"	4.75"	3-1/2" IF F / 100K FLG	1/4" / .250 - 31	70K - 100K
400-3276	36"	4.75"	3-1/2" IF F / 100K FLG	1/4" / .250 - 31	70K - 100K

Note: Swivel and static options sold separately.



## BEAVERTAIL HD BACKREAMER (9-36K)

Part Number	Cut	Shaft	Description	NPT/Orifice/Nozzle Qty.	Model(s)
400-1439*	4.5" / 114.3 mm	2.0"	1.10-5 F / 12K TAB	7/16" / .188	5K
400-2602	6" / 152.4 mm	2.75"	2.0 API IF F / 20K TAB	1/4" / .188 - 13	9K - 20K
400-2603	8" / 203.2 mm	2.75"	2.0 API IF F / 20K TAB	1/4" / .188 - 13	9K - 20K
400-2604	10" / 254 mm	2.75"	2.0 API IF F / 20K TAB	1/4" / .188 - 13	9K - 20K
400-2605	12" / 304.8 mm	2.75"	2.0 API IF F / 20K TAB	1/4" / .188 - 13	9K - 20K
400-2606	14" / 355.6 mm	2.75"	2.0 API IF F / 20K TAB	1/4" / .188 - 13	9K - 20K
400-2607	16" / 406.4 mm	2.75"	2.0 API IF F / 20K TAB	1/4" / .188 - 13	9K - 20K
400-2608	18" / 457.2 mm	2.75"	2.0 API IF F / 20K TAB	1/4" / .188 - 13	9K - 20K
400-2609	20" / 508 mm	2.75"	2.0 API IF F / 20K TAB	1/4" / .188 - 13	9K - 20K
400-2974	6" / 152.4 mm	2.75"	2.38 API R F / 20K TAB	1/4" / .188 - 13	16K - 36K
400-2381	8" / 203.2 mm	3.25"	2.38 API R F / 2.38 API R F	1/4" / .188 - 13	16K - 36K
400-2382	10" / 254 mm	3.25"	2.38 API R F / 2.38 API R F	1/4" / .188 - 13	16K - 36K
400-2383	12" / 304.8 mm	3.25"	2.38 API R F / 2.38 API R F	1/4" / .188 - 13	16K - 36K
400-2384	14" / 355.6 mm	3.25"	2.38 API R F / 2.38 API R F	1/4" / .188 - 13	16K - 36K
400-2385	16" / 406.4 mm	3.25"	2.38 API R F / 2.38 API R F	1/4" / .188 - 13	16K - 36K
400-2386	18" / 457.2 mm	3.25"	2.38 API R F / 2.38 API R F	1/4" / .188 - 13	16K - 36K
400-2387	20" / 508 mm	3.25"	2.38 API R F / 2.38 API R F	1/4" / .188 - 13	16K - 36K
400-2388	24" / 609.6 mm	3.25"	2.38 API R F / 2.38 API R F	1/4" / .188 - 13	16K - 36K



BACKREAMERS

BACKREAMERS

## BEAVERTAIL HD BACKREAMER (40-100K)



Part Number	Cut	Shaft	Description	NPT/Orifice/Nozzle Qty.	Model(s)
400-2508	8" / 203.2 mm	4.25"	2.88 API R F / 2.88 API R F	3/8" / .250 - 13	40K - 60K
400-2509	10" / 254 mm	4.25"	2.88 API R F / 2.88 API R F	3/8" / .250 - 13	40K - 60K
400-2510	12" / 304.8 mm	4.25"	2.88 API R F / 2.88 API R F	3/8" / .250 - 13	40K - 60K
400-2511	14" / 355.6 mm	4.25"	2.88 API R F / 2.88 API R F	3/8" / .250 - 13	40K - 60K
400-2512	16" / 406.4 mm	4.25"	2.88 API R F / 2.88 API R F	3/8" / .250 - 13	40K - 60K
400-2513	18" / 457.2 mm	4.25"	2.88 API R F / 2.88 API R F	3/8" / .250 - 13	40K - 60K
400-2514	20" / 508 mm	4.25"	2.88 API R F / 2.88 API R F	3/8" / .250 - 13	40K - 60K
400-2515	24" / 609.6 mm	4.25"	2.88 API R F / 2.88 API R F	3/8" / .250 - 13	40K - 60K
400-2524	12" / 304.8 mm	4.75"	3.5 API IF F / 3.5 API IF F	3/8" / .250 - 13	60K - 100K
400-2525	14" / 355.6 mm	4.75"	3.5 API IF F / 3.5 API IF F	3/8" / .250 - 13	60K - 100K
400-2526	16" / 406.4 mm	4.75"	3.5 API IF F / 3.5 API IF F	3/8" / .250 - 13	60K - 100K
400-2527	18" / 457.2 mm	4.75"	3.5 API IF F / 3.5 API IF F	3/8" / .250 - 13	60K - 100K
400-2528	20" / 508 mm	4.75"	3.5 API IF F / 3.5 API IF F	3/8" / .250 - 13	60K - 100K
400-2529	24" / 609.6 mm	4.75"	3.5 API IF F / 3.5 API IF F	3/8" / .250 - 13	60K - 100K
400-2530	28" / 711.2 mm	4.75"	3.5 API IF F / 3.5 API IF F	3/8" / .250 - 13	60K - 100K
400-2531	30" / 762 mm	4.75"	3.5 API IF F / 3.5 API IF F	3/8" / .250 - 13	60K - 100K
400-2532	34" / 863.6 mm	4.75"	3.5 API IF F / 3.5 API IF F	3/8" / .250 - 13	60K - 100K
400-2533	36" / 914.4 mm	4.75"	3.5 API IF F / 3.5 API IF F	3/8" / .250 - 13	60K - 100K
400-2534	38" / 965.2 mm	4.75"	3.5 API IF F / 3.5 API IF F	3/8" / .250 - 13	60K - 100K
400-2535	40" / 1016 mm	4.75"	3.5 API IF F / 3.5 API IF F	3/8" / .250 - 13	60K - 100K
400-2536	42" / 1067 mm	4.75"	3.5 API IF F / 3.5 API IF F	3/8" / .250 - 13	60K - 100K
400-3343	18" / 457.2 mm	7"	5-1/2 FH,F/5-1/2 FH,F	1/2" / .25 - 13	120K
400-3344	24" / 609.6 mm	7"	5-1/2 FH,F/5-1/2 FH,F	1/2" / .25 - 13	120K
400-3345	30" / 762 mm	7"	5-1/2 FH,F/5-1/2 FH,F	1/2" / .25 - 13	120K
400-3346	36" / 914.4 mm	7"	5-1/2 FH,F/5-1/2 FH,F	1/2" / .25 - 13	120K
400-3347	42" / 1067 mm	7"	5-1/2 FH,F/5-1/2 FH,F	1/2" / .25 - 13	120K
400-3348	48" / 1219.2 mm	7"	5-1/2 FH,F/5-1/2 FH,F	1/2" / .25 - 13	120K
400-3349	54" / 1371.6 mm	7"	5-1/2 FH,F/5-1/2 FH,F	1/2" / .25 - 13	120K



BACKREAMERS

## WARTHOG™ HD BACKREAMER



Part Number	Cut	Shaft	Description	NPT/Orifice/Nozzle Qty.	Model(s)
400-2537	8" / 203.2 mm	2.75"	2.0 API R F / 20K Tab	1/4" / .188 - 5	9K - 20K
400-2538	10" / 254 mm	2.75"	2.0 API R F / 20K Tab	1/4" / .188 - 8	9K - 20K
400-2539	12" / 304.8 mm	2.75"	2.0 API R F / 20K Tab	1/4" / .188 - 14	9K - 20K
400-2540	14" / 355.6 mm	2.75"	2.0 API R F / 20K Tab	1/4" / .188 - 14	9K - 20K
400-2541	16" / 406.4 mm	2.75"	2.0 API R F / 20K Tab	1/4" / .188 - 17	9K - 20K
400-2542	18" / 457.2 mm	2.75"	2.0 API R F / 20K Tab	1/4" / .188 - 20	9K - 20K
400-2349	8" / 203.2 mm	3.25"	2.38 API R F / 2.38 API R F	1/4" / .188 - 6	16K - 36K
400-2350	10" / 254 mm	3.25"	2.38 API R F / 2.38 API R F	1/4" / .188 - 9	16K - 36K
400-2351	12" / 304.8 mm	3.25"	2.38 API R F / 2.38 API R F	1/4" / .188 - 15	16K - 36K
400-2352	14" / 355.6 mm	3.25"	2.38 API R F / 2.38 API R F	1/4" / .188 - 15	16K - 36K
400-2353	16" / 406.4 mm	3.25"	2.38 API R F / 2.38 API R F	1/4" / .188 - 18	16K - 36K
400-2354	18" / 457.2 mm	3.25"	2.38 API R F / 2.38 API R F	1/4" / .188 - 21	16K - 36K
400-2355	20" / 508 mm	3.25"	2.38 API R F / 2.38 API R F	1/4" / .188 - 21	16K - 36K
400-2356	24" / 609.6 mm	3.25"	2.38 API R F / 2.38 API R F	1/4" / .188 - 21	16K - 36K
400-2423	8" / 203.2 mm	4.25"	2.88 API R F / 2.88 API R F	1/4" / .188 - 5	40K - 60K
400-2424	10" / 254 mm	4.25"	2.88 API R F / 2.88 API R F	1/4" / .188 - 8	40K - 60K
400-2425	12" / 304.8 mm	4.25"	2.88 API R F / 2.88 API R F	1/4" / .188 - 8	40K - 60K
400-2427	14" / 355.6 mm	4.25"	2.88 API R F / 2.88 API R F	1/4" / .188 - 14	40K - 60K
400-2426	16" / 406.4 mm	4.25"	2.88 API R F / 2.88 API R F	1/4" / .188 - 17	40K - 60K
400-2428	18" / 457.2 mm	4.25"	2.88 API R F / 2.88 API R F	1/4" / .188 - 20	40K - 60K
400-2429	20" / 508 mm	4.25"	2.88 API R F / 2.88 API R F	1/4" / .188 - 20	40K - 60K
400-2430	24" / 609.6 mm	4.25"	2.88 API R F / 2.88 API R F	1/4" / .188 - 20	40K - 60K
400-2431	28" / 711.2 mm	4.25"	2.88 API R F / 2.88 API R F	1/4" / .188 - 20	40K - 60K
400-2432	30" / 762 mm	4.25"	2.88 API R F / 2.88 API R F	1/4" / .188 - 20	40K - 60K
400-2447	12" / 304.8 mm	4.75"	3.5 API IF F / 3.5 API IF F	1/4" / .188 - 8	60K - 100K
400-2448	14" / 355.6 mm	4.75"	3.5 API IF F / 3.5 API IF F	1/4" / .188 - 8	60K - 100K
400-2449	16" / 406.4 mm	4.75"	3.5 API IF F / 3.5 API IF F	1/4" / .188 - 17	60K - 100K
400-2450	18" / 457.2 mm	4.75"	3.5 API IF F / 3.5 API IF F	1/4" / .188 - 17	60K - 100K
400-2451	20" / 508 mm	4.75"	3.5 API IF F / 3.5 API IF F	1/4" / .188 - 20	60K - 100K
400-2452	24" / 609.6 mm	4.75"	3.5 API IF F / 3.5 API IF F	1/4" / .188 - 20	60K - 100K
400-2453	28" / 711.2 mm	4.75"	3.5 API IF F / 3.5 API IF F	1/4" / .188 - 20	60K - 100K
400-2454	30" / 762 mm	4.75"	3.5 API IF F / 3.5 API IF F	1/4" / .188 - 20	60K - 100K
400-2455	34" / 863.6 mm	4.75"	3.5 API IF F / 3.5 API IF F	1/4" / .188 - 26	60K - 100K
400-2456	36" / 914.4 mm	4.75"	3.5 API IF F / 3.5 API IF F	1/4" / .188 - 26	60K - 100K



BACKREAMERS



SOIL CONDITION CHART KEY ●=Best ◐=Better ○=Good

## SANDHOG HD BACKREAMER

● SANDY SOIL  
● SOFT SOIL  
◐ MEDIUM SOIL

Part Number	Cut	Pack	Shaft	Description	Nozzle/Qty.	Model(s)
400-2964	6" / 152.4 mm	4	2.75"	2.0 IF / 20K Tab	1/4" / .188 - 8	9K - 20K
400-2965	8" / 203.2 mm	6	2.75"	2.0 IF / 20K Tab	1/4" / .188 - 8	9K - 20K
400-2966	10" / 254 mm	8	2.75"	2.0 IF / 20K Tab	1/4" / .188 - 8	9K - 20K
400-2967	12" / 304.8 mm	10	2.75"	2.0 IF / 20K Tab	1/4" / .188 - 14	9K - 20K
400-2968	6" / 152.4 mm	4	3.25"	2.38 API R / 20K Tab	1/4" / .188 - 8	16K - 36K
400-2969	8" / 203.2 mm	6	3.25"	2.38 API R / 20K Tab	1/4" / .188 - 8	16K - 36K
400-2970	10" / 254 mm	8	3.25"	2.38 API R / 20K Tab	1/4" / .188 - 8	16K - 36K
400-2971	12" / 304.8 mm	10	3.25"	2.38 API R / 20K Tab	1/4" / .188 - 14	16K - 36K

## SWAB REAMER

● HARD SOIL  
◐ COBBLE ROCK

Part Number	Cut	Shaft	Description	NPT/Orifice/Nozzle/Qty.	Model(s)
400-2614	5.5" / 139.7 mm	3.25"	2.77 M / 20K Tab	1/4" NPT / .100/3	AT30
400-3154	5.5" / 139.7 mm	3.25"	2.36 M / 20K Tab	1/4" NPT / .100/3	AT32
400-3157	6.5" / 165.1 mm	3.25"	2.36 M / 20K Tab	1/4" NPT / .100/3	AT32
400-2799	5.5" / 139.7 mm	4.375"	2.95 M / 20K Tab	1/4" NPT / .100/3	AT40
400-3066	6.5" / 165.1 mm	4.375"	2.95 M / 20K Tab	1/4" NPT / .100/3	AT40
400-2716	6.5" / 165.1 mm	4.375"	3.25 M / 20K Tab	1/4" NPT / .100/3	AT4020, AT60
400-2719	6.5" / 165.1 mm	4.375"	3.44 M / 20K Tab	1/4" NPT / .100/3	AT100



BACKREAMERS

## ROCK MONSTER™ HD BACKREAMER

● SOFT ROCK  
● MEDIUM ROCK  
◐ HARD ROCK

Part Number	Cut	IADC	Shaft	Front Connection	Rear Connection	Nozzle Quantity
400-2993	10" / 254 mm	517	3.75"	2.875" API-REG	40K Tab	4
400-3036	12" / 304.8 mm	517	3.75"	2.875" API-REG	40K Tab	4
400-3037	14" / 355.6 mm	537	4.75"	3.5" API IF	3.5" API IF	4
400-3038	14" / 355.6 mm	517	4.75"	3.5" API IF	3.5" API IF	5
400-3039	16" / 406.4 mm	537	4.75"	3.5" API IF	3.5" API IF	5
400-2735	18" / 457 mm	537	4.75"	3.5" API IF	3.5" API IF	5
400-2736	20" / 508 mm	537	4.75"	3.5" API IF	3.5" API IF	6
400-2737	22" / 559 mm	537	4.75"	3.5" API IF	3.5" API IF	6
400-1647	24" / 610 mm	537	4.75"	3.5" API IF	3.5" API IF	6

## ROCK MONSTER™ REAMER NOZZLES

Part Number	Cut	Orifice Size	Retention Type	Compatible Reamers
159-1022	Jet Nozzle	.375	Snap Ring	400-2993
159-1025	Jet Nozzle	.125	Snap Ring	400-2993
159-1026	Jet Nozzle	.25	Snap Ring	400-2993
159-1027	Jet Nozzle	.25	Snap Ring	400-3037, 400-3038, 400-3039, 400-2735, 400-2736, 400-2737, 400-2738
159-1028	Jet Nozzle	.375	Snap Ring	400-3037, 400-3038, 400-3039, 400-2735, 400-2736, 400-2737, 400-2738

Note: Sold in quantities of three.



## EZ BACKREAMER

○ COBBLE ROCK  
◐ MEDIUM SOIL  
● HARD SOIL

Part Number	Cut	Shaft	Description	NPT/Orifice/Nozzle Qty.	Model(s)
400-2732	6" / 152.4 mm	3.25"	1.63-6 F, EZ2 / 30K Tab	1/4" NPT / .100/3	JT10
400-2579	6" / 152.4 mm	3.25"	2.00-6 F, EZ2 / 30K Tab	1/4" NPT / .100/3	JT20, JT24, JT32
400-2584	8" / 203.2 mm	3.25"	2.00-6 F, EZ2 / 30K Tab	1/4" NPT / .100/3	JT20, JT24, JT32
400-2699	6" / 152.4 mm	3.25"	2.25-6 F, EZ3 / 30K Tab	1/4" NPT / .100/3	JT25, JT28, JT30
400-2700	8" / 203 mm	3.25"	2.25-6 F, EZ3 / 30K Tab	1/4" NPT / .100/3	JT25, JT28, JT30



BACKREAMERS

**SOIL CONDITION CHART**

KEY ●=Best ○=Better ○=Good

## ROCKMASTER™ HOLE OPENER



Part Number	Cut	Series	Shaft	Description	Model(s)
190-1403	6" / 152.4 mm	TCI	2.75"	2.59 F / 30K Tab	27K - 30K Drills
190-1404	6" / 152.4 mm	MT200	2.75"	2.59 F / 30K Tab	27K - 30K Drills
190-1391	8" / 203.2 mm	TCI	4"	2.59 F / 40K Soc	27K - 40K Drills
190-1392	8" / 203.2 mm	MT200	4"	2.59 F / 40K Soc	27K - 40K Drills
190-1393	10" / 254 mm	TCI	4"	2.59 F / 40K Soc	27K - 40K Drills
190-1394	10" / 254 mm	MT200	4"	2.59 F / 40K Soc	27K - 40K Drills
190-1395	12" / 304.8 mm	TCI	4"	2.59 F / 40K Soc	27K - 40K Drills
190-1396	12" / 304.8 mm	MT200	4"	2.54 F / 40K	27K - 40K Drills
368-380	Body Only	N/A	4"	2.59 F / 40K	27K - 40K Drills
190-1397	10" / 254 mm	TCI	5.75"	3.5 API M / 30K Tab	60K - 100K Drills
190-1398	10" / 254 mm	MT200	5.75"	3.5 API M / 30K Tab	60K - 100K Drills
190-1399	12" / 304.8 mm	TCI	5.75"	3.5 API M / 30K Tab	60K - 100K Drills
190-1400	12" / 304.8 mm	MT200	5.75"	3.5 API M / 30K Tab	60K - 100K Drills
190-1401	14" / 355.6 mm	TCI	5.75"	3.5 API M / 30K Tab	60K - 100K Drills
190-1402	14" / 355.6 mm	MT200	5.75"	3.5 API M / 30K Tab	60K - 100K Drills
368-236	Body Only	N/A	5.75"	3.5 API M / 30K Tab	60K - 100K Drills
190-1405	16" / 406.4 mm	TCI 500	8"	3.27 F / 100K Tab	60K - 100K Drills
190-1406	16" / 406.4 mm	TCI 700	8"	3.27 F / 100K Tab	60K - 100K Drills
190-1407	18" / 457.2 mm	TCI 500	8"	3.27 F / 100K Tab	60K - 100K Drills
190-1408	18" / 457.2 mm	TCI 700	8"	3.27 F / 100K Tab	60K - 100K Drills
190-1409	20" / 508 mm	TCI 500	8"	3.27 F / 100K Tab	60K - 100K Drills
190-1410	20" / 508 mm	TCI 700	8"	3.27 F / 100K Tab	60K - 100K Drills
190-1411	22" / 558.8 mm	TCI 500	8"	3.27 F / 100K Tab	60K - 100K Drills
190-1412	22" / 558.8 mm	TCI 700	8"	3.27 F / 100K Tab	60K - 100K Drills
400-973	Body Only	N/A	8"	3.27 F / 100K Tab	60K - 100K Drills

Note: MT = Mill Tooth and TCI = Tungsten Carbide Inserts



BACKREAMERS

## REPLACEMENT CUTTER SETS

Part Number	Cone Height	Series	Shaft	Cut
369-301	1.8"	TCI 500	2.75"	6" / 125.4 mm
369-302	1.8"	MILL	2.75"	6" / 125.4 mm
400-809	1.8"	TCI 600	2.75"	6" / 125.4 mm
400-078	2.3"	TCI 500	4"/5.75"	8/10" / 203.2 / 254 mm
400-079	2.3"	MILL	4"/5.75"	8/10" / 203.2 / 254 mm
400-080	3.2"	TCI 500	4"/5.75"	10/12" / 254 / 304.8 mm
400-081	3.2"	MILL	4"/5.75"	10/12" / 254 / 304.8 mm
400-082	4.1"	TCI 500	4"/5.75"	12/14" / 304.8 / 355.6 mm
400-083	4.1"	MILL	4"/5.75"	12/14" / 304.8 / 355.6 mm
400-810	2.3"	TCI 600	4"/5.75"	8/10" / 203.2 / 254 mm
400-811	3.2"	TCI 600	4"/5.75"	10/12" / 254 / 304.8 mm
400-812	4.1"	TCI 600	4"/5.75"	12/14" / 304.8 / 355.6 mm
400-974		TCI 500	8"	16" / 406.4 mm
400-975		TCI 700	8"	16" / 406.4 mm
400-976		TCI 500	8"	18" / 457.2 mm
400-977		TCI 700	8"	18" / 457.2 mm
400-978		TCI 500	8"	20" / 508 mm
400-979		TCI 700	8"	20" / 508 mm
400-980		TCI 500	8"	22" / 558.8 mm
400-981		TCI 700	8"	22" / 558.8 mm

## CENTERING CONE



Part Number	Size	All Terrain Model(s)	Description	Nozzle Quantity
400-3011	6"	AT30 / AT40	2.88 API R F/M	8
400-3012	8"	AT30 / AT40	2.88 API R F/M	8
400-2998	10"	AT30 / AT40	2.88 API R F/M	8
400-3013	12"	AT30 / AT40	2.88 API R F/M	8
400-3014	14"	AT30 / AT40	2.88 API R F/M	8
400-3015	16"	AT30 / AT40	2.88 API R F/M	8
400-3016	18"	AT30 / AT40	2.88 API R F/M	8
400-3023	10"	AT60 / AT100	3.5 API IF F/M	8
400-3024	12"	AT60 / AT100	3.5 API IF F/M	8
400-3025	14"	AT60 / AT100	3.5 API IF F/M	8
400-3026	16"	AT60 / AT100	3.5 API IF F/M	8
400-3027	18"	AT60 / AT100	3.5 API IF F/M	8

BACKREAMERS

# PULLERS, SWIVELS & TABS

## BIT PULLING ACCESSORIES

Part Number	Description
369-709	Bit Clevis - JT5 bits only
400-242*	Bit Pull Eye Assembly
400-2668	Pull Tool (small)
906-1828	Shackle 3/8 screw pin anchor
400-2669	Pull Tool with shackle

\*See Bit Page for Application.



## PULLING GRIPS

### WITH SWIVEL

Part Number	Size
185-901	1/4 - 1/2"
185-902	1/2 - 3/4"
185-903	3/4 - 1-1/4"
185-904	1-1/4 - 2"
185-906	2 - 2-3/4"
185-907	2-3/4 - 3-1/2"
185-913	3-1/2 - 4-1/4"
185-914	4-1/4 - 4-3/4"

### WITHOUT SWIVEL

Part Number	Size
185-917	3/4 - 1-1/4"
185-918	1-1/4 - 2"
185-919	2 - 2-3/4"
185-920	2-3/4 - 3-1/2"
185-921	3-1/2 - 4-1/4"

### HEAVY-DUTY PULLING GRIP

Part Number	Size
185-922	3/4 - 1-1/4"
185-923	1-1/4 - 2"
185-924	2 - 2-3/4"
185-925	2-3/4 - 3-1/2"
185-926	3-1/2 - 4-1/4"

## ANCHOR SHACKLES

Part Number	Size	Bolt Size	Width	Load Limit
110-289	5/16"	3/8"	.53"	1K
110-509	1/2"	5/8"	.815"	4K
110-969	5/8"	3/4"	1.065"	6.5K
110-040	3/4"	7/8"	1.25"	9.5K
110-987	7/8"	1"	1.44"	13K
110-847	1"	1-1/8"	1.69"	17K
111-018	1-1/4"	1-3/8"	2.03"	24K
111-019	1-1/2"	1-5/8"	2.375"	34K
369-709	Bit Clevis	1/2"	N/A	
908-1828	3/8"	7/16"	.66"	2K



See bit pages for application: (pages 24-34)

## SLEEVED PULLERS



Part Number	Size	Min - Max ID	SDR Range
902-2100	1"	1.050 - 1.200" ID	11 - 17
902-2200	1.25"	1.200 - 1.500" ID	9 - 17
902-2300	1.5"	1.530 - 1.620" ID	11 - 13.5
902-2400	2"	1.900 - 2.050" ID	11 - 13.5
902-2500	2.5"	2.310 - 2.700" ID	11 - 17
902-2600	3"	2.825 - 3.070" ID	11 - 17
902-2700	4"	3.620 - 4.090" ID	11 - 21
902-2800	5"	4.470 - 5.160" ID	11 - 26
902-2900	6"	5.320 - 6.040" ID	11 - 21

## NON-SLEEVED PULLERS



Part Number	Size	Min - Max ID	SDR Range
902-0010	1"	1.050 - 1.200" ID	11 - 17
902-0101	1.25"	1.200 - 1.500" ID	9 - 17
902-0151	1.5"	1.530 - 1.620" ID	11 - 13.5
902-0201	2"	1.900 - 2.050" ID	11 - 13.5
902-0251	2.5"	2.310 - 2.700" ID	11 - 17
902-0301	3"	2.825 - 3.070" ID	11 - 17
902-0401	4"	3.620 - 4.090" ID	11 - 21
902-0501	5"	4.470 - 5.160" ID	11 - 26
902-0601	6"	5.320 - 6.040" ID	11 - 21
902-0801	8"	7.050 - 7.750" ID	11 - 21
902-1001	10"	8.670 - 9.875" ID	11 - 26
902-1201	12"	10.430 - 11.960" ID	11 - 23.5

## SLEEVED PULLER REPLACEMENT PARTS

Replacement Part	1" (25mm) 902-2100	1.25" (32mm) 902-2200	1.5" (40mm) 902-2300	2" (50mm) 902-2400	2.5" (63mm) 902-2500	3" (75mm) 902-2600	4" (120mm) 902-2700	6" (160mm) 902-2800
Stem	902-2101	902-2201	902-2301	902-2401	902-2401	902-2610	902-2610	902-2901
O-Ring Kit	902-2103	902-2203	902-2303	902-2403	902-2503	902-2603	902-2703	902-2904
Sleeve Assembly	902-2102	902-2202	902-2302	902-2402	902-2502	902-2601	902-2701	902-2902
Jaw Set	902-2114	902-2212	902-2315	902-2414	902-2513	902-2602	902-2713	902-2915
Expander Cone	902-0009	902-0109	902-0158	902-0209	902-0209	902-0302	902-0302	902-0619
Nut	n/a	n/a	n/a	n/a	n/a	2921	2921	2921
Eyebolt	30304	30304	51290	51290	51290	30291	30291	30291

PULLERS, SWIVELS & TABS

PULLERS, SWIVELS & TABS



## CARROT PULLER

Part Number	Size	Min - Max ID	SDR Range
901-0102	.5 - 1"	0.38 - 1.08" ID	9 - 11
901-0105	1"	0.90 - 1.21" ID	7.3 - 17
901-0122	1 - 1.25"	1 - 1.39" ID	9 - 13.5
901-0125	1.25"	1.27 - 1.51" ID	9 - 17
901-0152	1.25 - 1.5"	1.1 - 1.66" ID	7 - 17
901-0150	1.5"	1.52 - 1.67" ID	11 - 17
901-0202	2.0"	1.82 - 2.10" ID	9 - 17

## SLIM LINE SWIVELS

Part Number	Capacity
400-1588	5K Swivel
400-3056	10K Swivel
400-2744	20K Swivel
400-3059	30K Swivel

## THREADED SWIVELS

Part Number	Connection	Capacity
369-195	1.94-4F / 12K Tab	10K
400-111	1.94-4M / 12K Tab	10K
400-112	1.94-4M / 20K Tab	20K
400-236	1.94-4F / 20K Tab	20K
300-1160	1.94-4F / 30K Tab	20K
400-2558	2.38 API R M / 20K Clevis	40K
400-2559	2.38 API R M / 20K Tab	40K
400-2560	2.38 API R M / 30K Clevis	40K
400-2561	2.38 API R M / 30K Tab	40K
400-1390	3.44-4M SS / 30K Tab	40K
400-2562	2.88 API R M / 30K Clevis	60K
400-2563	2.88 API R M / 30K Tab	60K
400-2564	2.88 API R M / 40K Clevis	60K
400-2565	2.88 API R M / 40K Tab	60K
400-2566	3.5 API IF M / 40K Clevis	100K
400-2567	3.5 API IF M / 40K Tab	100K
400-2568	3.5 API IF M / 100K Clevis	100K
400-2569	3.5 API IF M / 100K Tab	100K

## DOUBLE CLEVIS

Part Number	Connection	Capacity
185-935	5K Clevis / 5K Clevis	10K
401-283	20K Clevis / 20K Clevis	20K
300-1164	30K Clevis / 30K Clevis	30K
401-294	100K Clevis / 100K Clevis	40K

## CLEVIS TO TAB

Part Number	Connection	Capacity
368-513	12K Clevis / 12K Tab	10K
368-634	20K Clevis / 20K Tab	20K
369-712	30K Clevis / 20K Tab	20K
300-1157	30K Clevis / 30K Tab	30K
400-748	40K Clevis / 40K Tab	60K
369-971	70K Clevis / 40K Tab	60K
369-972	100K Clevis / 70K Tab	100K

## SOCKETS

Part Number	Connection	Capacity
300-1159	40K Socket F / 30K Tab	30K
400-221	40K Socket / 40K Tab	60K

## PULL TAB & PULL CLEVIS

Part Number	Description	Model(s)
369-308	1.21 M / 5K Tab	JT520
369-309	1.31 F / 5K Tab	JT520
400-1432	1.33 F / 5K Tab	JT5
368-352	1.41 M / 12K Tab	JT920, JT920L, JT921, JT921S, JT922
400-921	1.88 F / 10K Tab	JT1220M1
401-007	1.88 F / 20K Tab	JT1220M1
369-864	1.94 M / 10K Tab	JT920L, JT1220M1
369-865	1.94 M / 20K Tab	JT920, JT920L, JT921, JT921S, JT922, JT1220M1, JT1720M1, JT2020M1
400-2554	2.38 API R M / 20K Tab	16K - 36K
400-2419	2.38 API R M / 30K Tab	16K - 36K
400-760	DS 2.77 M / 30K Tab	AT2720, AT30
400-803	SS 2.77 M / 30K Tab	AT2720, AT30 Cobble
400-2555	2.88 API R M / 30K Tab	40K - 70K
400-2518	2.88 API R M / 40K Tab	40K - 70K
401-246	3.25 M / 30K Tab	AT4020, AT60
400-818	3.25 M / 40K Tab	AT4020, AT60
400-820	3.25 F / 60K Clevis	AT60
369-123	3.27 M / 70K Tab	JT8020M1, JT100M1
369-122	3.27 F / 70K Tab	JT8020M1, JT100M1
400-2556	3.5 API IF M / 40K Tab	70K - 100K
400-2519	3.5 API IF M / 100K Tab	70K - 100K
400-583	40K Socket / 30K Tab	3.5" Shaft Reamers
400-704	40K Socket / 40K Tab	JT4020M1, AT4020
369-854	70K Clevis / 40K Tab	JT4020M1, JT60, JT8020M1, JT100M1
400-781	2.77" 4 DS AT F / 30K	AT30
400-2557*	2.88 API R M / 40K Socket	40K, 60K
400-3121	2.95 M / 40K Tab	AT40

DS = Double Shoulder      SS = Single Shoulder  
 \* Converts threaded HD reamers to 40K socket, connections and swivels.



## NOZZLES

### BEACON HOUSING & BACKREAMER NOZZLES



Part Number	Thread Size	Orifice Size
105-2635	1/8 NPT	Plug
908-0766	1/8 NPT	.155"
159-1006	1/4 NPT	.1"
159-1007	1/4 NPT	.125"
159-1008	1/4 NPT	.188"
159-1009	1/4 NPT	.25"
908-0043	1/4 NPT	.203"
149-200	1/4 NPT	.07"
149-201	1/4 NPT	.1"
149-202	1/4 NPT	.15"
149-203	1/4 NPT	.2"
149-204	1/4 NPT	.25"
906-2673	1/4 NPT	.25"
105-2637	1/4 NPT	Plug
159-1010	3/8 NPT	.125"
159-1011	3/8 NPT	.188"
159-1012	3/8 NPT	.25"
114-002	3/8 NPT	Plug
906-1526	3/8 NPT	.312"

## QUICK WRENCHES & JAWS

PULLERS, SWIVELS & TABS



### WRENCH SET

Part Number	Description	Size	Included
368-681	Wrench Handle Assembly	0 - 4,000 ft-lb	
368-533	Vice Handle Assembly	0 - 4,000 ft-lb	
368-761	2 Vice Kit	0 - 4,000 ft-lb	2 Vice
401-229	Wrench Set	0 - 4,000 ft-lb	2 Vice, 1 Flat
369-297	Wrench Set	0 - 4,000 ft-lb	1 Vice, 2 Flat
368-683	Quick Wrench Jaw	4.25"	
400-3242	Quick Wrench Jaw	4.25" Modular	
400-3195	1" SwitchBack Adapter AT32 SwitchBack Quick Wrench		
400-3197	SwitchBack Hydratong Adapter		
400-3196	2" Adapter block for Hydratong to fit Modular 400-3195 or 400-3242		

QUICK WRENCHES & JAWS

# HYDRA-TONG

## HYDRA-TONG

Part Number	Description	Size
400-2638	Hydra-Tong Assembly	Fits Outside Diameter 3.625" up to 5"
400-2703	Hydra-Tong Assembly (CE)	Fits Outside Diameter 3.625" up to 5"
400-161	Hydra-Tong Jaw Handle	
400-2637	Hydra-Tong Power Supply & Hose Kit	
400-2702	Hydra-Tong Power Supply & Hose Kit (CE)	
105-592	Chain Extension	
110-833	Snapper Pin (3/8" x 2-3/4")	
150-722	Hydraulic Wrench Cylinder	
178-503	Slide Pin	
400-161	Jaw Handle	
400-889	Chain Tong Assembly	
150-4648	Hydra-Tong Hose Assembly	
215-2605	28V Battery Charger (CE)	
215-2489	28V Battery Charger	
215-2507	28V Battery	
255-1050	Hydra-Tong Pump Oil	

Note: CE = 50hz / 240V for battery pack charger.

## BIT BLOCK JAW

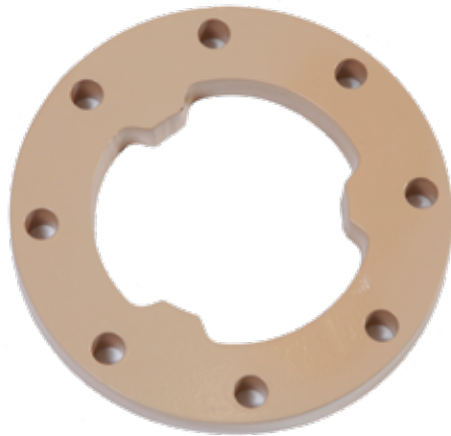
Part Number	Description	Size
369-795	Tri-Cone	4.75"
400-928	Tri-Cone (1")	5.5"
400-3053	5 Blade PDC	5.5"
400-2982	Tri-Cone (2")	5.5"
401-133	Tri-Cone	6.25"
401-148	Soft Formation	6.25"
400-705	Tri-Cone	6.5"
400-3126	5 Blade PDC	6.5"
400-1119	Soft Formation	6.65"



## FLAT JAW

Part Number	Description	Size
368-693	Quick Wrench Jaw	1.24"
369-281	Quick Wrench Jaw	1.42"
369-282	Quick Wrench Jaw	1.56"
368-692	Quick Wrench Jaw	1.63"
368-690	Quick Wrench Jaw	2"
368-689	Quick Wrench Jaw	2.1"
368-688	Quick Wrench Jaw	2.25"
368-687	Quick Wrench Jaw	2.35"
368-686	Quick Wrench Jaw	2.4"
369-286	Quick Wrench Jaw	2.5"
400-004	Jaw (1" Thick)	3.25"
368-682	Quick Wrench Jaw	3.75"
369-101	Jaw (1.5" Thick)	3.75"
400-749	Jaw	4.5"
400-1483	Hydra-Tong	4"
400-2644	Hydra-Tong	4.25"

# VACUUM ACCESSORIES



## HYDRO EXCAVATION

Part Number	Model(s)	Description
150-2624	FX20, FX25, FX30, FXT30, MV800	Prospector™ Nozzle (#3)
150-2625	FX50, FXT50, FX65, FXT65	Prospector Nozzle (#5)
190-2506	FX50, FXT50, FX65, FXT65	Prospector Assembly Lance 48" (#5)
190-2507	FX20, FX25, FX30, FXT30, MV800	Prospector Assembly Lance 48" (#3)
259-1012	All	Prospector Extension 48"
259-1017	All	Wash Wand
150-2630	FX20, FX25, FX30, FXT30, MV800	Prospector Nozzle (#3) Repair Kit
150-2631	FX20, FXT50, FX65, FXT65	Prospector Nozzle (#5) Repair Kit

Note: #3 - 2.7 gpm @ 3,000 psi  
#5 - 4.5 gpm @ 3,000 psi



Prospector Nozzle



259-1017



Prospector Lance



## AIR EXCAVATION

Part Number	Model(s)	Description
350-4430	FXT30 Air, FXT50 Air, FXT65 Air	Air Saber Assembly
350-4431	FXT30 Air, FXT50 Air, FXT65 Air	Air Saber Extension 36"



VACUUM ACCESSORIES

**For the most up to date version of this booklet scan the QR code below**

